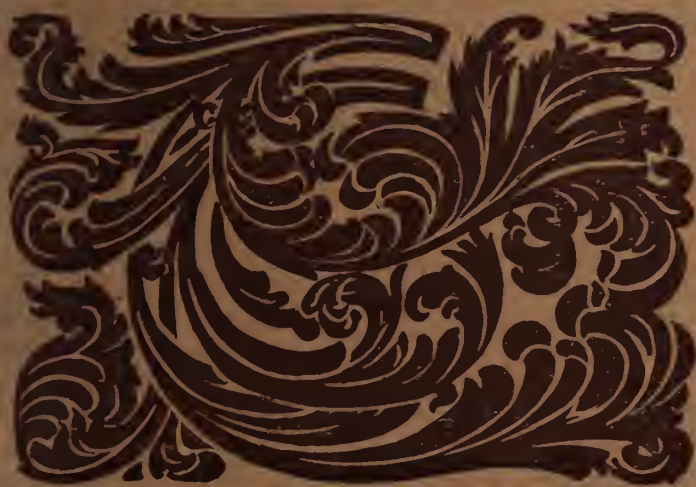
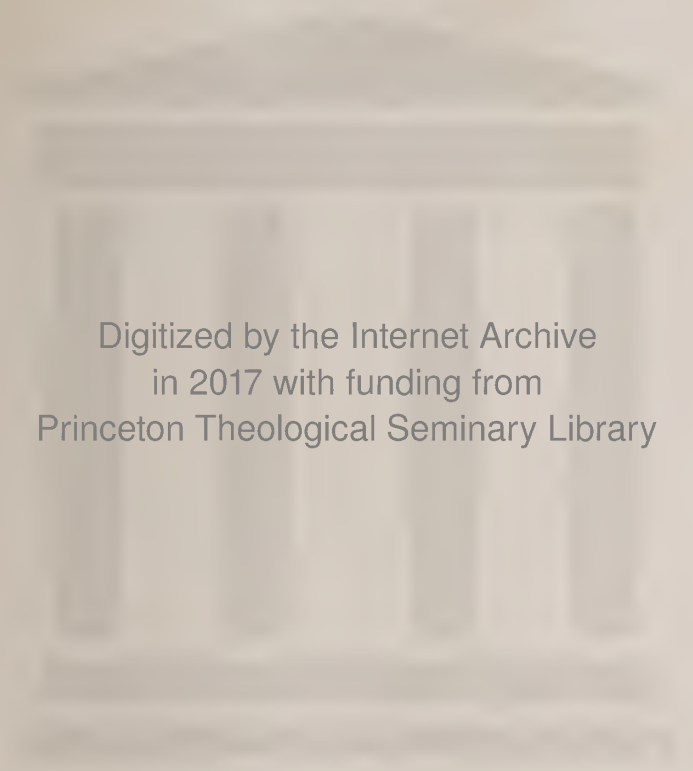


PRINCETON  
THEOLOGICAL  
SEMINARY



Catalogue 1902-1903





Digitized by the Internet Archive  
in 2017 with funding from  
Princeton Theological Seminary Library



FIRST HOME OF THE SEMINARY  
DR. ARCHIBALD ALEXANDER'S RESIDENCE

CATALOGUE

OF THE

THEOLOGICAL SEMINARY

OF THE

PRESBYTERIAN CHURCH

LOCATED AT

PRINCETON, N. J.

—

NINETY-FIRST YEAR, 1902-1903

---

C. S. ROBINSON & CO., UNIVERSITY PRINTERS, PRINCETON, N. J

---

# BOARD OF DIRECTORS.

---

GEORGE D. BAKER, D.D., *President*, . . . . PHILADELPHIA.  
REV. E. D. WARFIELD, LL.D., *1st Vice-Prest.*, EASTON, PA.  
SILAS B. BROWNELL, LL.D., *2d Vice-Prest.*, NEW YORK CITY.  
MAITLAND ALEXANDER, D.D., *Secretary*, . PITTSBURGH, PA.

## Term to Expire May, 1903.

JOSEPH T. SMITH, D.D., LL.D., . . . . . BALTIMORE, MD.  
FRANCIS B. HODGE, D.D., . . . . . WILKESBARRE, PA.  
HOWARD DUFFIELD, D.D., . . . . . NEW YORK CITY.  
EDWARD B. HODGE, D.D., . . . . . PHILADELPHIA.  
WILLIAM L. McEWAN, D.D., . . . . . PITTSBURGH, PA.  
J. ROSS STEVENSON, D.D., . . . . . NEW YORK CITY.  
REV. ETHELBERT D. WARFIELD, LL.D., EASTON, PA.  
J. ADDISON HENRY, D.D., . . . . . PHILADELPHIA.  
LOGAN C. MURRAY, Esq., . . . . . LOUISVILLE, KY.  
JOHN J. McCOOK, LL.D., . . . . . NEW YORK CITY.  
ELISHA H. PERKINS, Esq., . . . . . BALTIMORE, MD.

## Term to Expire May, 1904.

ELIJAH R. CRAVEN, D.D., LL.D., . . . . . PHILADELPHIA.  
WILLIAM E. SCHENCK, D.D., . . . . . MONTCLAIR, N. J.  
WILLIAM IRVIN, D.D., . . . . . OYSTER BAY, N. Y.  
SAMUEL T. LOWRIE, D.D., . . . . . PHILADELPHIA.  
JOHN R. DAVIES, D.D., . . . . . PHILADELPHIA.  
MARCUS A. BROWNSON, D.D., . . . . . PHILADELPHIA.  
JOHN F. PATTERSON, D.D., . . . . . ORANGE, N. J.  
SILAS B. BROWNELL, LL.D., . . . . . NEW YORK CITY.  
HUGH H. HAMILL, Esq., . . . . . TRENTON, N. J.  
CHARLES H. MATHEWS, Esq., . . . . . PHILADELPHIA.

## Term to Expire May, 1905.

ROBERT RUSSELL BOOTH, D.D., LL.D., . . NEW YORK CITY.  
GEORGE ALEXANDER, D.D., . . . . . NEW YORK CITY.  
GEORGE D. BAKER, D.D., . . . . . PHILADELPHIA.  
FRANCIS L. PATTON, D.D., LL.D., . . . . PRINCETON, N. J.  
MAITLAND ALEXANDER, D.D., . . . . . PITTSBURGH, PA.  
JOHN FOX, D.D., . . . . . BROOKLYN, N. Y.  
DONALD GUTHRIE, D.D., . . . . . BALTIMORE, MD.  
HON. WILLIAM M. LANNING, . . . . . TRENTON, N. J.  
MORRIS H. STRATTON, Esq., . . . . . SALEM, N. J.  
GEORGE STERRY, Esq., . . . . . NEW YORK CITY.

## BOARD OF TRUSTEES.

---

ELMER EWING GREEN, Esq., *President*, . . TRENTON, N. J.  
JAMES H. WIKOFF, M.D., *Vice-President*, . PRINCETON, N. J.  
JOHN DIXON, D.D., *Secretary*, . . . . . TRENTON, N. J.  
E. FRANCIS HYDE, Esq., *Treasurer*, . . . . . NEW YORK CITY.

MATTHEW NEWKIRK, D.D., . . . . . WYNCOTE, PA.  
JOHN D. WELLS, D.D., . . . . . BROOKLYN, N. Y.  
F. WOLCOTT JACKSON, Esq., . . . . . NEWARK, N. J.  
JOHN DIXON, D.D., . . . . . TRENTON, N. J.  
EDWARD B. HODGE, D.D., . . . . . PHILADELPHIA.  
ELMER EWING GREEN, Esq., . . . . . TRENTON, N. J.  
ALEXANDER MAITLAND, Esq., . . . . . NEW YORK CITY.  
SAMUEL M. STUDDIFORD, D.D., . . . . . TRENTON, N. J.  
CHARLES T. HALEY, D.D., . . . . . NEWARK, N. J.  
JAMES H. WIKOFF, M.D., . . . . . PRINCETON, N. J.  
JOHN SINCLAIR, Esq., . . . . . NEW YORK CITY.  
FRANK K. HIPPLE, LL.D., . . . . . PHILADELPHIA.  
JOHN FOX, D.D., . . . . . BROOKLYN, N. Y.  
JOHN H. CONVERSE, Esq., . . . . . PHILADELPHIA.  
THOMAS W. SYNNOTT, Esq., . . . . . WENONAH, N. J.  
E. FRANCIS HYDE, Esq., . . . . . NEW YORK CITY.  
DAVID MAGIE, D.D., . . . . . PATERSON, N. J.  
WILLIAM W. KNOX, D.D., . . . . . NEW BRUNSWICK, N. J.  
NATHANIEL TOOKER, Esq., . . . . . EAST ORANGE, N. J.  
HENRY D. MOORE, Esq., . . . . . HADDONFIELD, N. J.

---

ROBERT M. ANDERSON, *Assistant Treasurer*  
*and Superintendent of Grounds and Buildings*, . PRINCETON, N. J.

---

*On Finance*—ALEXANDER MAITLAND, Chairman; JOHN SINCLAIR,  
F. WOLCOTT JACKSON, E. FRANCIS HYDE, and NATHANIEL TOOKER.

*On Real Estate*—JAMES H. WIKOFF, M.D., Chairman; JOHN DIXON,  
D.D., ELMER E. GREEN, and FRANK K. HIPPLE, LL.D.

*On the Library*—SAMUEL M. STUDDIFORD, D.D., Chairman; ED-  
WARD B. HODGE, D.D., ALEXANDER MAITLAND, and CHARLES T.  
HALEY, D.D.



# FACULTY.

---

FRANCIS LANDEY PATTON, D.D., LL.D.,  
PRESIDENT-ELECT OF THE SEMINARY,  
LECTURER ON THEISM.

WILLIAM MILLER PAXTON, D.D., LL.D.,  
PROFESSOR EMERITUS OF HOMILETICS.

BENJAMIN BRECKINRIDGE WARFIELD, D.D., LL.D.,  
CHARLES HODGE PROFESSOR OF DIDACTIC AND POLEMIC THEOLOGY.

JOHN D. DAVIS, D.D., LL.D.,  
HELENA PROFESSOR OF ORIENTAL AND OLD TESTAMENT LITERATURE.

JOHN DE WITT, D.D., LL.D.,  
ARCHIBALD ALEXANDER PROFESSOR OF CHURCH HISTORY.

WILLIAM BRENTON GREENE, JR., D.D.,  
STUART PROFESSOR OF THE RELATIONS OF PHILOSOPHY AND SCIENCE TO  
THE CHRISTIAN RELIGION.

GEERHARDUS VOS, PH.D., D.D.,  
PROFESSOR OF BIBLICAL THEOLOGY.

ROBERT DICK WILSON, PH.D., D.D.,  
PROFESSOR OF SEMITIC PHILOLOGY AND OLD TESTAMENT CRITICISM.

SAMUEL ALBERT MARTIN, D.D.,  
ACTING PROFESSOR OF PRACTICAL THEOLOGY.

HENRY WILSON SMITH, A.M.,  
J. C. GREEN INSTRUCTOR IN ELOCUTION.

REV. WILLIAM PARK ARMSTRONG, A.M.,  
INSTRUCTOR IN THE NEW TESTAMENT.

REV. JAMES OSCAR BOYD, B.D.,  
ELLIOTT F. SHEPARD INSTRUCTOR IN THE OLD TESTAMENT.

REV. CASPAR WISTAR HODGE, PH.D.,

ASSISTANT IN DOGMATIC THEOLOGY.

EDMON MORRIS,

INSTRUCTOR IN VOCAL MUSIC.

---

REV. JOSEPH HEATLY DULLES, A.M.,

LIBRARIAN.

## SPECIAL LECTURERS.

---

L. P. STONE LECTURER.

WILLIS JUDSON BEECHER, D.D.,

PROFESSOR OF HEBREW LANGUAGE AND LITERATURE  
IN AUBURN THEOLOGICAL SEMINARY.

*Subject:* The Prophets and the Promise.

STUDENTS' LECTURER ON MISSIONS.

REV. WILLIAM AMBROSE SHEDD,

A MISSIONARY OF THE PRESBYTERIAN CHURCH TO PERSIA.

*Subject:* The Historical Relations of Islam and the Oriental Churches.

ILLUSTRATED LECTURES ON BIBLICAL GEOGRAPHY.

REV. PUTNAM CADY,

PASTOR OF EMMANUEL PRESBYTERIAN CHURCH, AMSTERDAM, N. Y.

*Subjects:* The Physical Features of Western Palestine.

The Dead Sea and the Arnon.

WILLIAM LIBBEY, D.Sc.,

PROFESSOR OF PHYSICAL GEOGRAPHY IN PRINCETON UNIVERSITY.

*Subjects:* Petra.

The Jordan Valley.

## GRADUATE STUDENTS.

### GEORGE S. GREEN FELLOW IN HEBREW.

<i>Name.</i>	<i>Residence.</i>	<i>Place of Study.</i>
ALBERT BALDWIN DODD, B.D., Westminster College, Mo., 1898; Princeton Seminary, 1902.	Greenwood, Mo.,	Princeton. 210 H H

### NEW TESTAMENT FELLOW AND ARCHIBALD ROBERTSON SCHOLAR.

GEORGE JEFFREY RUSSELL, B.D., Princeton University, 1899; Princeton Seminary, 1902.	Montclair, N. J.,	Edinburgh.
---	-------------------	------------

### WILLIAM HENRY GREEN FELLOWS.

DAVID DEFORD BURRELL, B.D., Yale University, 1898; Princeton Seminary, 1901.	New York, N. Y.,	Princeton. 15 A H
BENJAMIN FRANKLIN PAIST, JR., B.D., Ursinus College, 1899; Princeton Seminary, 1902.	Cornwells, Pa.,	Princeton. 201 H H

---

<i>Name.</i>	<i>Residence.</i>	<i>Room.</i>
REV. LOUIS BERKHOF, Holland Christian Reformed, 1897; Holland Christian Reformed Theological School, 1900.	Pearline, Mich.,	76 B H
BRUCE JOHNSTON GIFFEN, Erskine College, 1897; Princeton Seminary, 1902.	Cairo, Egypt,	34 A H
SHOHKICHI HATA, Wabash College, 1899; Princeton Seminary, 1902.	Yamaguchi, Japan,	311 H H
REV. CHARLES FRANCIS HUSS, Waynesburg College, 1896; Western Theological Seminary, 1899.	Waynesburg, Pa.,	21 B H
REV. LEONARD ZACHARIAH JOHNSON, Lincoln University, 1898; Lincoln University, 1901.	Princeton, N. J.,	109 W S

REV. MARCIUS WILSON KRATZ,	Allentown, Pa.,	40	B	H
Lafayette College, 1895; Princeton Seminary, 1898.				
JOHN MEEKER,	Emporia, Kan.,	415	H	H
Wooster University, 1896; San Francisco Seminary, 1902.				
EDWARD DE MOSS MILLER, PH.D.,	Gerrardstown, W. Va.,	19	A	H
Princeton College, 1886; Princeton Seminary, 1890.				
THOMAS MCKEAN POLK,	Fagg's Manor, Pa.,	200	H	H
Lafayette College, 1896; Princeton Seminary, 1902.				
REV. JONATHAN WESLEY PURCELL,	Manalapan, N. J.,	37	A	H
Kansas Normal College, 1897; Princeton Seminary, 1902.				
REV. EDWARD NEWELL WARE,	Crawfordsville, Ind.,	22	B	H
Illinois Wesleyan University, 1887; McCormick Seminary, 1889.				

Graduate Students,—15.

## SENIOR CLASS.

<i>Name.</i>	<i>Residence.</i>	<i>Room.</i>
OLIVER PAUL BARNHILL, Centre College, 1900.	La Grange, Ky.,	208 H H
FRANK GOESS BOSSERT, University of Pennsylvania, 1899.	Philadelphia, Pa.,	413 H H
WESLEY CORWIN BREWER, Coe College, 1900.	Vinton, Ia.,	37 A H
BENJAMIN MICKLE BROWN, University of Texas.	Princeton, N. J.,	124 M S
JOHN BROWN, Hastings College, 1900.	Belfast, Ire.,	14 A H
SAMUEL ROBERT BROWN, Princeton University, 1900.	Waltersburg, Pa.,	63 B H
HARRY DAVENPORT, Wesleyan University, 1900.	Bridgeport, Conn.,	14 A H
EDWIN EMERSON DAVIS, Oberlin College.	New York, N. Y.,	206 H H
VICTOR BARR DEMAREE, Hanover College, 1900.	Franklin, Ind.,	305 H H
JOHN JAMES DE PREE, Hope College, 1899.	Sioux Center, Ia.,	C B H
JOSEPH ZEPHERIN FAIVRE, York Collegiate Institute, 1898.	Mendenhall, Pa.,	69 B H
JAMES FALCONER, University of the Pacific, 1900.	San Jose, Cal.,	31 A S
JOHN MCCLELLAN FERGUSON,	Manchester, O.,	32 B H
HOWARD MOODY FRANK, Washburn College, 1899.	Topeka, Kan.,	209 H H
ABRAM DAVID POLLOCK GILMOUR, Hampden-Sidney College, 1896.	Bristol, Tenn.,	5 B H

MILLS STRONG GRIMES, Macalester College, 1900.	Nunda, N. Y.,	32 A H
ALFRED LAWRENCE HALL-QUEST, Augustana College, 1900.	Brooklyn, N. Y.,	205 H H
DAVID HENRY HARE, Emporia College, 1899.	Viola, Kan.,	209 H H
JAMES HERON, Cedarville College, 1899.	Philadelphia, Pa.,	1 B H
STUART NYE HUTCHISON, Lafayette College, 1900.	Belvidere, N. J.,	417 H H
JOHN ROBERT LANDSBOROUGH, Macalester College, 1900.	Park River, N. D.,	28 A H
ROBERT GRAHAM LEETCH, Lafayette College, 1900.	Washington, D. C.,	309 H H
WALKER EUGENE MCBATH, University of Tennessee, 1898.	Knoxville, Tenn.,	310 H H
ALBERT JOSEPH MCCARTNEY, University of Wisconsin, 1900.	Beaver Falls, Pa.,	117 H H
JAMES ALEXANDER MCCLURE, Washington and Lee University, 1899.	Front Royal, Va.,	19 B H
ALEC ORM MACDONALD, University of Manitoba, 1900.	Teeswater, Ont.,	25 A H
SAMUEL McDOWELL, Princeton University, 1900.	Maltby, Pa.,	47 B H
WILLIAM MACLEOD, Edinburgh University, 1900.	Elphine, Scotl.,	24 A H
DONALD MORRISON MATHESON, Harvard University.	Cambridge, Mass.,	25 E P
HENRY WILSON MILLER, Franklin and Marshall College, 1900.	Colwyn, Pa.,	407 H H
WALTER RUE MURRAY, Wooster University, 1899.	Chinan Fu, China,	317 H H
CHARLES FRANKLIN MYERS, Washington and Lee University.	Lexington, Va.,	5 N S
CHARLES LEWIS NEIBEL, Princeton University, 1900.	Dayton, O.,	203 H H

## STUDENTS.

11

WARREN NELSON NEVIUS, Princeton University, 1899.	Glen Ridge, N. J.,	36 A H
JOHN NEWELL, Colorado College, 1900.	Colorado Springs, Colo.,	35 A H
JOHN NOORDEWIER, University of Michigan, 1899.	Jenison, Mich.,	405 H H
JOHN EDGAR PARK, Royal University of Ireland, 1902.	Belfast, Ire.,	42 A H
CHARLES EDWARD RATH, Lake Forest College, 1900.	Ackley, Ia.,	41 A H
HARRY BALDWIN ROBERTS, Centre College, 1900.	Ironton, O.,	23 A H
REV. ROBERT ROBINSON, New York University, 1892.	New Gretna, N. J.,	23 B H
HENRY PETER SANDERS, Princeton University, 1900.	Baltimore, Md.,	24 A H
BOUDINOT SEELEY, JR., Williams College, 1900.	Portland, Or.,	115 H H
AUGUSTUS TAYLOR SCHLEICH, Hanover College, 1900.	Amanda, O.,	55 B H
WILLIAM JAMES SHARP, Macalester College, 1900.	Canton, S. D.,	16 A H
RALPH MELVIN SMITH, Hastings College, 1900.	Bostwick, Neb.,	2 A H
WILLIAM COLLIES TENNEY, Southwestern Presbyterian University, 1895.	Ladonia, Tex.,	3 B H
DAVID ALPHAEUS THOMPSON, Macalester College, 1900.	St. Paul, Minn.,	29 A H
ROBERT LITTLE VANCE, Magee College.	Drumatoland, Ire.,	62 B H
EZRA ALLEN VAN NUYS, Franklin College, 1900.	Franklin, Ind.,	313 H H
PAUL GUSTAVUS VIEHE,	Evansville, Ind.,	25 B H
ISAAC EMMONS WALLACE, King College, 1900.	Iva, S. C.,	46 B H

WALTER LOWRIE WHALLON, Hanover College, 1899.	Cincinnati, O.,	307 H H
GEORGE MINOR WHITENACK, Wabash College, 1900.	Crawfordsville, Ind.,	411 H H
GIBSON WILSON, Wabash College, 1900.	Bluffton, Ind.,	13 A H
RAYMOND HIRAM WILSON, Dickinson College, 1894.	Danville, Pa.,	217 H H
JAMES WRAY, Magee College.	Carnone, Ire.,	62 B H

Senior Class,—56.



## MIDDLE CLASS.

<i>Name.</i>	<i>Residence.</i>	<i>Room.</i>
HERBERT EDGAR BLAIR, Park College, 1901.	Salina, Kan.,	401 H H
ROBERT ANDREW BLAIR, Geneva College, 1901.	Aghadowey, Ire.,	107 H H
HARRY LAITY BOWLBY, Princeton University, 1901.	Asbury, N. J.,	211 H H
WILLIAM ELIZABETH BROOKS, Westminster College, Pa., 1900.	Philadelphia, Pa.,	43 A H
HUGH BROWN, Cliff College, England.	Belfast, Ire.,	6 A H
GEORGE BURSLEM, French American College, 1900.	Baltimore, Md.,	27 A H
DONALD STEWART CARMICHAEL, Alma College, 1901.	Calumet, Mich.,	5 A H
ALFRED JOHN FOWLIE, Queen's College, Ontario, 1901.	Erin, Ont.,	53 B H
HERBERT EUGENE HAYS, Drury College, 1899.	Iberia, Mo.,	315 H H
RALPH KIDDOW HICKOK, Wooster University, 1899.	Wooster, O.,	44 A H
GEORGE MONROE HOWERTON, Furman University, 1900.	Greenville, S. C.,	29 B H
WILLIAM CLEMENT ISETT, Lafayette College, 1901.	Pittsburgh, Pa.,	111 H H
MATTHEW FOSTER JOHNSTON, Royal University of Ireland.	Brooklyn, N. Y.,	26 A H
NORMAN ELIAS KOEHLER, Princeton University, 1899.	Kingston, Pa.,	301 H H
HARRY MCCLENAGHAN, University of Nebraska, 1901.	Cedar Rapids, Neb.,	400 H H

EDWARD FROST MCFARLAND, Occidental College, 1901.	Rivera, Cal.,	315 H H
CHARLES CURTIS MCINTIRE, Park College, 1901.	Parkville, Mo.,	113 H H
PHINEAS MCKEE, Royal University of Ireland, 1901.	Lisburn, Ire.,	20 B H
HAGOP MARKARIAN, Lafayette College, 1901.	Tarsus, Turkey,	300 H H
GUY LOUIS MORRILL, Massachusetts Institute of Technology.	Wollaston, Mass.,	207 H H
EDWIN CLYDE NESBIT, Muskingum College, 1900.	Marion, O.,	12 A H
GEORGE WILCOX NICHOLAS, Morgan College.	Govarstown, Md.,	8 G S
RICHARD FRANKLIN POWEL, JR., University of Nashville, 1899.	Atlanta, Ga.,	46 B H
HUGH WATSON RENDALL, Lincoln University, 1900.	Lincoln University, Pa.,	109 H H
HAROLD MCAFEE ROBINSON, Park College, 1901.	White Bear, Minn.,	40 A H
EDWARD JOHNSON RUSSELL, Princeton University, 1894.	Colwyn, Pa.,	31 A H
ELMER WYLIE SAXTON, Westminster College, Pa., 1901.	Florence, Pa.,	304 H H
CHARLES WESLEY SIDEBOTHAM, Alma College, 1901.	Lake City, Mich.,	3 A H
JOHN ROGER THOMAS, Ripon College, 1901.	Wild Rose, Wis.,	17 A H
WILLIAM HAYES TOPPING, Hanover College, 1901.	St. Louis, Mo.,	77 B H
JOHN EDWIN TRIPLETT, JR., Hampden-Sidney College, 1900.	Duffield, W. Va.,	57 B H
GERRIT VERKUYL, Park College, 1901.	Parkville, Mo.,	L A
CARROLL HARVEY YERKES, Lafayette College, 1901.	Berwyn, Pa.,	213 H H

Middle Class,—33.

## JUNIOR CLASS.

<i>Name.</i>	<i>Residence.</i>	<i>Room.</i>
OSWALD THOMPSON ALLIS, University of Pennsylvania, 1901.	Philadelphia, Pa.,	22 A H
CHARLES WILSON BARRETT, Centre College, 1898.	Richmond, Ky.,	204 H H
ISAAC CRANE BATES, New York University, 1902.	Newark, N. J.,	110 H H
THOMAS GEORGE BAXTER, Delaware College, 1900.	Dover, Del.,	A A H
JAMES HAMILL BOAL, Lafayette College, 1902.	Port Carbon, Pa.,	44 B H
THOMAS WALLACE BOYD, Magee College.	Duneven, Ire.,	60 B H
BEREND BRUINS, Hope College, 1902.	Boyden, Ia.,	39 B H
DWIGHT CHAUNCEY CHAPIN, Occidental College, 1902.	Los Angeles, Cal.,	33 B H
EARL CUBBISON CLEELAND, Washington and Jefferson College, 1902.	Butler, Pa.,	66 B H
JOHN THOMAS DAVIS, Wake Forest College, 1900.	South Norfolk, Va.,	302 H H
HENRY PETER DE PREE, Hope College, 1902.	Zeeland, Mich.,	51 B H
WILLIAM RUFUS DODD, Westminster College, Mo., 1895.	Raymore, Mo.,	25 E P
CHESTER HAVILAND CRANE DUDLEY, Emporia College, 1902.	Emporia, Kan.,	303 H H
JOHN MORTON ESPEY, Wooster University, 1902.	Allegheny, Pa.,	308 H H
HARRY FINNEY, Wooster University, 1902.	Corsica, O.,	308 H H

ROY CHALMERS FLEMING, Emporia College, 1902.	Wichita, Kan.,	303 H H
ALBERT WHITE GRIGG, University of Pennsylvania, 1902.	Philadelphia, Pa.,	103 H H
LATTA GRISWOLD, Princeton University, 1901.	Princeton, N. J.,	21 D S
PAUL FERDINAND BELA HAMBORSZKY, Eperjes Gymnasium, 1900.	Scranton, Pa.,	75 B H
EDWARD FRANCIS HAMMOND, Bellevue College, 1902.	Walnut, Ia.,	61 B H
LORIN ANDREW HANDLEY, Hanover College, 1902.	Franklin, Ind.,	74 B H
JOHN WILLIAM HARRIS, Park College, 1902.	Dille, Tex.,	101 H H
ALFRED ALEXANDER JAMES HOGG, Magee College.	Bellaghy, Ire.,	43 B H
JAMES FREDERICK HORN, Wabash College.	Lafayette, Ind.,	41 B H
WILLIAM MERRITT HUTCHISON, Park College, 1901.	Alva, Okla.,	410 H H
HOWARD ICKIS KERR, Emporia College, 1901.	Emporia, Kan.,	37 B H
LUCIAN LAMAR KNIGHT, University of Georgia, 1888.	Atlanta, Ga.,	49 B H
MELVIN ROBERT LAIRD, Illinois College, 1901.	Maysville, Ill.,	406 H H
CLARENCE EDWARD MCCARTNEY, University of Wisconsin, 1901.	Beaver Falls, Pa.,	17 B H
WILLIAM LOVE MCCORMICK, Franklin College, 1902.	Sewellsville, O.,	73 B H
WILLIAM MCCOY, Parsons College, 1902.	Belfast, Ire.,	2 A H
JOHN GRESHAM MACHEN, Johns Hopkins University, 1901.	Baltimore, Md.,	64 B H
WILLIAM ALFRED MACKAY, Dalhousie College, 1901.	West Branch, N. S.,	408 H H

## STUDENTS.

17

FINLAY GRANT MACKINTOSH, Dalhousie College, 1901.	Springville, N. S.,	408 H H
WALTER FRAZER McMILLIN, Westminster College, Mo., 1902.	Jefferson City, Mo.,	33 A H
FRED RAYMOND MARSH, Bowdoin College, 1899.	Eustis, Fla.,	27 B H
IVAN GOCHNAUER MARTIN, Princeton University, 1902.	Bonview, Pa.,	403 H H
WILLIAM CORY MEEKER, Wooster University, 1901.	Emporia, Kan.,	415 H H
THOMAS MORGAN, Lafayette College, 1902.	Wilkesbarre, Pa.,	202 H H
EDWIN McCORD MULOCK, Princeton University, 1902.	Dubois, Pa.,	45 A H
WILLIAM COOPER MUNSON, Princeton University, 1902.	Findlay, O.,	402 H H
JOHN ALISON NESBITT, Lafayette College, 1902.	Colora, Md.,	215 H H
JOHN ROGERS PEALE, Lafayette College, 1902.	New Bloomfield, Pa.,	215 H H
EMANUEL CONCEICAO PIRES, Illinois College, 1902.	Jacksonville, Ill.,	7 A H
HAROLD SIBLEY RAMBO, University of Pennsylvania.	Philadelphia, Pa.,	103 H H
CHARLES FREDERIC REED, Princeton University, 1902.	Broguetville, Pa.,	52 B H
PARKE RICHARDS, Lafayette College, 1902.	West Pittston, Pa.,	8 A H
JOSEPH HENRY SCHAEFFER, Princeton University, 1902.	Baltimore, Md.,	20 A H
ARTHUR LONSON SOUTH, Union College, 1902.	Birchton, N. Y.,	58 B H
JOSEPH YERKES STEWART,	Cedar Knoll, Pa.,	21 A H
LEON STEWART, Grove City College, 1901.	North Liberty, Pa.,	306 H H

CLARENCE EMMANUEL STREUBEL, East Orange, N. J., Princeton University, 1902.	403 H H
LELAND HOWARD TRACY, Berkeley, Cal., University of California, 1900.	72 B H
JOHN VAN PEURSEM, Maurice, Ia., Hope College, 1902.	59 B H
KARL LOUIS VON KRUG, Kingston, Pa., Princeton University, 1901.	71 B H
WARREN RAY WARD, Hackettstown, N. J., Princeton University, 1902.	402 H H
JOSEPH LAUBACH WEISLEY, Catasauqua, Pa., Muhlenberg College, 1902.	202 H H
WILLIAM JOHN WILKINSON, Brooklyn, N. Y., William and Mary College, 1902.	31 B H
REV. WILLIAM DANIEL WILLIAMS, Popejoy, Ia., Ripon College, 1900.	L A
THOMAS YOUNGER, Carlinville, Ill., Blackburn University, 1901.	302 H H

Junior Class—60.

## SPECIAL STUDENTS.

*(Pursuing a Partial Course.)*

<i>Name.</i>	<i>Residence.</i>	<i>Room.</i>
REV. EDWIN WILLIAM BEHNER, Princeton, N. J., Baldwin University.		28 Ma S
THOMAS ROSEBERRY GOOD,	Denver, Colo.,	409 H H
JOHN ALJOE HUBBARD,	Princeton, N. J.,	230 N S
MARK LEROY PHILLIPS, Southwestern Presbyterian University, 1899.	Orwood, Miss.,	65 B H
HOWARD ROLAND REITER, Princeton University, 1898.	Philadelphia, Pa.,	45 B H
CHARLES ERNEST SCOTT, Alma College, 1898.	Alma, Mich.,	105 H H
HOMER WHITE TAYLOR, Princeton University, 1900.	Pittsburgh, Pa.,	404 H H
KENZO YAMADA, Meiji Gaku In.	Osaka, Japan,	67 B H

Special Students—8.

## ABBREVIATIONS.

A H—Alexander Hall	G S—Green Street.
B H—Brown Hall	L A—Leigh Avenue.
H H—Hodge Hall.	Ma S—Maple Street.
A S—Alexander Street.	M S—Mercer Street.
D S—Dickinson Street.	N S—Nassau Street.
E P—Edwards Place.	W S—Witherspoon Street.

# REPRESENTATION.

## SEMINARIES (*Graduate Students*).

Holland Christian Reformed Theological School, . . . . .	1	Princeton Seminary, . . . . .	10
Lincoln University, . . . . .	1	San Francisco Seminary, . . . . .	1
McCormick Seminary, . . . . .	1	Western Theological Seminary, . . .	1

## COLLEGES.

Alma College, . . . . .	3	Manitoba, University of, . . . . .	1
Augustana College, . . . . .	1	Massachusetts Institute of Technology, . . . . .	1
Baldwin University, . . . . .	1	Meiji Gaku In, . . . . .	1
Bellevue College, . . . . .	1	Michigan, University of, . . . . .	1
Blackburn University, . . . . .	1	Morgan College, . . . . .	1
Bowdoin College, . . . . .	1	Muhlenberg College, . . . . .	1
California, University of, . . . . .	1	Muskingum College, . . . . .	1
Cedarville College, . . . . .	1	Nashville, University of, . . . . .	1
Centre College, . . . . .	3	Nebraska, University of, . . . . .	1
Cliff College, England, . . . . .	1	New York University, . . . . .	2
Coe College, . . . . .	1	Oberlin College, . . . . .	1
Colorado College, . . . . .	1	Occidental College, . . . . .	2
Dalhousie College, . . . . .	2	Pacific, University of, . . . . .	1
Delaware College, . . . . .	1	Park College, . . . . .	6
Dickinson College, . . . . .	1	Parsons College, . . . . .	1
Drury College, . . . . .	1	Pennsylvania, University of, . . . .	4
Edinburgh University, . . . . .	1	Princeton University, . . . . .	21
Emporia College, . . . . .	4	Queen's College, Ontario, . . . . .	1
Eperjes Gymnasium, . . . . .	1	Ripon College, . . . . .	2
Erskine College, . . . . .	1	Royal University of Ireland, . . . .	3
Franklin College, . . . . .	2	Southwestern Presbyterian University, . . . . .	2
Franklin and Marshall College, . . .	1	Tennessee, University of, . . . . .	1
French American College, . . . . .	1	Texas, University of, . . . . .	1
Furman University, . . . . .	1	Union College, . . . . .	1
Geneva College, . . . . .	1	Ursinus College, . . . . .	1
Georgia, University of, . . . . .	1	Wabash College, . . . . .	4
Grove City College, . . . . .	1	Wake Forest College, . . . . .	1
Hampden Sidney College, . . . . .	2	Washburn College, . . . . .	1
Hanover College, . . . . .	5	Washington and Jefferson College, .	1
Harvard University, . . . . .	1	Washington and Lee University, . .	2
Hastings College, . . . . .	2	Waynesburg College, . . . . .	1
Holland Christian Reformed, . . . .	1	Wesleyan University, . . . . .	1
Hope College, . . . . .	4	Westminster College, Missouri, . .	3
Illinois College, . . . . .	2	Westminster College, Pennsylvania,	2
Illinois Wesleyan University, . . . .	1	William and Mary College, . . . . .	1
Johns Hopkins University, . . . . .	1	Williams College, . . . . .	1
Kansas Normal College, . . . . .	1	Wisconsin, University of, . . . . .	2
King College, . . . . .	1	Wooster University, . . . . .	6
Lafayette College, . . . . .	12	Yale University, . . . . .	1
Lake Forest College, . . . . .	1	York Collegiate Institute, . . . . .	1
Lincoln University, . . . . .	2	No College Course, . . . . .	5
Macalester College, . . . . .	4		
Magee College, . . . . .	4		



STATES AND COUNTRIES.

California, . . . . .	4	North Dakota, . . . . .	1
Colorado, . . . . .	2	Ohio, . . . . .	10
Connecticut, . . . . .	1	Oklahoma, . . . . .	1
Delaware, . . . . .	1	Oregon, . . . . .	1
District of Columbia, . . . . .	1	Pennsylvania, . . . . .	39
Florida, . . . . .	1	South Carolina, . . . . .	2
Georgia, . . . . .	2	South Dakota, . . . . .	1
Illinois, . . . . .	3	Tennessee, . . . . .	2
Indiana, . . . . .	8	Texas, . . . . .	2
Iowa, . . . . .	7	Virginia, . . . . .	3
Kansas, . . . . .	8	West Virginia, . . . . .	2
Kentucky, . . . . .	2	Wisconsin, . . . . .	1
Maryland, . . . . .	6	Canada:	
Massachusetts, . . . . .	2	Nova Scotia, . . . . .	2
Michigan, . . . . .	6	Ontario, . . . . .	2
Minnesota, . . . . .	2	China, . . . . .	1
Mississippi, . . . . .	1	Egypt, . . . . .	1
Missouri, . . . . .	7	Ireland, . . . . .	10
Nebraska, . . . . .	2	Japan, . . . . .	2
New Jersey, . . . . .	14	Scotland, . . . . .	1
New York, . . . . .	7	Turkey, . . . . .	1

SUMMARY.

Graduate Students, . . . . .	15
Senior Class, . . . . .	56
Middle Class, . . . . .	33
Junior Class, . . . . .	60
Special Students, . . . . .	8
Total, . . . . .	172

## EXTRA-CURRICULUM COURSES,

AND THE STUDENTS WHO ARE PURSUING THEM.

---

### I. OLD TESTAMENT DEPARTMENT.

OLD TESTAMENT HISTORY BEFORE ABRAHAM WITH DR. DAVIS.

*Graduate Students:* J. MEEKER, E. D. MILLER. *Seniors:* J. J. DE PREE, J. R. LANDBOROUGH, J. A. MCCLURE, A. O. MACDONALD, C. F. MYERS, C. E. RATH, E. A. VAN NUYS. *Middlers:* W. E. BROWN, H. BROWN, R. K. HICKOK, E. F. MCFARLAND. *Juniors:* B. BRUNS, H. P. DE PREE. *Special Student:* C. E. SCOTT.

HISTORICAL CRITICISM OF THE BOOKS OF SAMUEL AND KINGS  
WITH DR. DAVIS.

*Graduate Student:* M. W. KRATZ. *Seniors:* J. R. LANDBOROUGH, A. O. MACDONALD. *Middlers:* H. BROWN, D. S. CARMICHAEL, G. L. MORRILL. *Special Student:* C. E. SCOTT.

THE TEACHING OF THE EIGHTH CENTURY PROPHETS  
WITH DR. VOS.

*Graduate Students:* L. BERKHOF, B. J. GIFFEN, C. T. HUSS, E. D. MILLER, J. W. PURCELL, E. N. WARE. *Seniors:* J. J. DE PREE, H. B. ROBERTS, P. G. VIEHE. *Special Student:* C. E. SCOTT.

TEXTUAL CRITICISM OF THE OLD TESTAMENT  
WITH DR. WILSON.

*Graduate Student:* A. B. DODD. *Seniors:* W. C. BREWER, J. J. DE PREE.

HIGHER CRITICISM OF THE OLD TESTAMENT  
WITH DR. WILSON.

*Graduate Student:* A. B. DODD.

## II. NEW TESTAMENT DEPARTMENT.

## THE TEACHING OF PAUL WITH DR. VOS.

*Graduate Students:* L. BERKHOF, D. D. BURRELL, B. J. GIFFEN, S. HATA, L. Z. JOHNSON, M. W. KRATZ, J. MEEKER, E. D. MILLER, B. F. PAIST, T. M. POLK. *Middlers:* H. BROWN, J. R. THOMAS, G. VERKUYL. *Special Students:* E. W. BEHNER, C. E. SCOTT.

## EXEGESIS OF THE EPISTLE TO THE HEBREWS WITH DR. VOS.

*Graduate Students:* L. BERKHOF, D. D. BURRELL, S. HATA, M. W. KRATZ, J. MEEKER, B. F. PAIST, T. M. POLK, E. N. WARE. *Seniors:* A. D. P. GILMOUR, J. HERON, J. A. MCCLURE, R. ROBINSON, H. P. SANDERS, W. C. TENNEY, P. G. VIEHE. *Middlers:* H. BROWN, G. BURSLEM, D. S. CARMICHAEL, H. E. HAYS, E. F. MCFARLAND, H. MARKARIAN, E. J. RUSSELL, G. VERKUYL. *Juniors:* B. BRUINS, L. GRISWOLD, C. F. REED, J. VAN PEURSEM. *Special Student:* C. E. SCOTT.

## THE APOSTOLIC FATHERS WITH MR. ARMSTRONG.

*Graduate Student:* S. HATA.

HISTORICAL AND DOCTRINAL STUDIES IN THE GOSPEL OF JOHN  
WITH MR. ARMSTRONG.

*Graduate Student:* D. D. BURRELL.

## JUSTIN MARTYR'S FIRST APOLOGY WITH MR. ARMSTRONG.

*Graduate Student:* J. W. PURCELL.

## III. DEPARTMENT OF SYSTEMATIC THEOLOGY.

AUGUSTINE AND LATIN PATRISTIC THEOLOGY WITH  
DR. WARFIELD.

*Graduate Students:* L. BERKHOF, B. J. GIFFEN, A. W. KRATZ, E. D. MILLER. *Seniors:* F. G. BOSSERT, S. R. BROWN, H. P. SANDERS, D. A. THOMPSON. *Middlers:* H. E. BLAIR, G. BURSLEM, H. E. HAYS, R. K. HICKOK, C. C. MCINTIRE, P. MCKEE, H. MARKARIAN, H. M. ROBINSON.

## THEOLOGICAL ENCYCLOPÆDIA WITH DR. WARFIELD.

*Graduate Student:* L. BERKHOF.EVOLUTION IN ITS RELATION TO THEOLOGY  
WITH DR. WARFIELD.*Graduate Student:* L. BERKHOF. *Middler:* G. L. MORRILL.

## THE DOCTRINE OF INSPIRATION WITH DR. WARFIELD.

*Seniors:* A. D. P. GILMOUR, J. A. McCLURE, C. F. MYERS.

## THE CHRISTIAN DOCTRINE OF SIN WITH DR. WARFIELD.

*Graduate Student:* J. W. PURCELL.

## THE DOCTRINE OF THE INCARNATION WITH DR. WARFIELD.

*Graduate Student:* B. J. GIFFEN. *Senior:* D. A. THOMPSON.

## THE DOCTRINE OF ATONEMENT WITH DR. WARFIELD.

*Graduate Student:* J. W. PURCELL. *Middlers:* G. BURSLEM, W. H. TOPPING.

## THE DOCTRINE OF THE HOLY SPIRIT WITH DR. WARFIELD.

*Middler:* H. E. HAYS.

## CALVIN'S INSTITUTES WITH DR. WARFIELD.

*Graduate Student:* T. M. POLK.PHILOSOPHICAL APOLOGETICS AND COMPARATIVE RELIGION  
WITH DR. GREENE.*Graduate Students:* D. D. BURRELL, A. B. DODD, C. F. HUSS, L. Z. JOHNSON, M. W. KRATZ, T. M. POLK, E. N. WARE. *Seniors:* F. G. BOSSERT, J. FALCONER, H. M. FRANK, A. D. P. GILMOUR, J. HERON, J. R. LANDSBOROUGH, J. A. McCLURE, C. F. MYERS, J. G. NOORDEWIER, C. E. RATH. *Middlers:* H. E. BLAIR, R. A. BLAIR, W. E. BROOKS, G. BURSLEM, H. E. HAYS, R. K. HICKOK, C. C. McINTIRE, H. M. ROBINSON, J. R. THOMAS. *Special Student:* E. W. BEHNER.

## METAPHYSICS OF CHRISTIAN APOLOGETICS WITH DR. GREENE.

*Graduate Students:* C. F. HUSS, M. W. KRATZ, T. M. POLK, E. N. WARE. *Senior:* P. G. VIEHE. *Juniors:* T. MORGAN, P. RICHARDS.

## THE TEN COMMANDMENTS WITH DR. GREENE.

*Graduate Students:* C. F. HUSS, M. W. KRATZ, T. M. POLK, E. N. WARE. *Seniors:* V. B. DEMAREE, A. D. P. GILMOUR, J. A. MCCLURE, C. F. MYERS, W. C. TENNEY, R. L. VANCE. *Juniors:* B. BRUNS, L. A. HANDLEY, W. M. HUTCHISON, T. MORGAN, H. S. RAMBO, P. RICHARDS, J. VAN PEURSEM.

## THE DOCTRINE OF THE PERSON OF CHRIST WITH DR. HODGE.

*Graduate Students:* L. BERKHOF, D. D. BURRELL, S. HATA, L. Z. JOHNSON, J. W. PURCELL, E. N. WARE. *Senior:* B. SEELEY. *Middlers:* R. K. HICKOK, C. C. MCINTIRE, W. H. TOPPING. *Juniors:* L. A. HANDLEY, W. M. HUTCHISON, T. MORGAN, P. RICHARDS.

## IV. DEPARTMENT OF CHURCH HISTORY.

## SEMINAR IN THE HISTORY OF DOCTRINE WITH DR. DEWITT.

*Graduate Students:* L. BERKHOF, D. D. BURRELL, C. F. HUSS, M. W. KRATZ, E. D. MILLER, T. M. POLK, E. N. WARE. *Seniors:* O. P. BARNHILL, A. D. P. GILMOUR, J. A. MCCLURE, C. F. MYERS, W. N. NEVIUS, R. H. WILSON.

## STUDYING EACH A SPECIAL SUBJECT WITH DR. DEWITT.

*Graduate Students:* S. HATA, B. F. PAIST, T. M. POLK, J. W. PURCELL. *Senior:* A. C. HALL-QUEST. *Junior:* L. GRISWOLD.

## V. DEPARTMENT OF SEMITIC LANGUAGES.

## ADVANCED ARABIC WITH DR. WILSON.

*Senior:* A. O. MACDONALD.

## ADVANCED SYRIAC WITH DR. WILSON.

*Seniors:* A. O. MACDONALD, J. NOORDEWIER.

## HEBREW SYNTAX WITH DR. WILSON.

*Graduate Student:* A. B. DODD.

### HEBREW. RAPID READING WITH DR. WILSON.

*Graduate Student:* J. MEEKER. *Middlers:* P. MCKEE, G. L. MORRILL, E. J. RUSSELL. *Juniors:* O. T. ALLIS, E. C. CLEELAND.

### SYRIAC FOR BEGINNERS WITH MR. BOYD.

*Graduate Student:* S. HATA.

### ARABIC FOR BEGINNERS WITH MR. BOYD.

*Senior:* W. C. BREWER. *Junior:* H. P. DEPREE.

## VI. SUBSIDIARY STUDIES IN VARIOUS DEPARTMENTS WITH PROFESSORS OF THE UNIVERSITY.

### HISTORY OF CONSTITUTIONAL GOVERNMENT WITH PRESIDENT WILSON.

*Graduate Students:* C. F. HUSS, J. MEEKER. *Seniors:* V. B. DEMAREE, C. F. MYERS. *Junior:* L. A. HANDLEY. *Special Student:* M. L. PHILLIPS.

### CONTEMPORARY ENGLISH ETHICS WITH PROFESSORS F. L. PATTON AND G. S. PATTON.

*Graduate Student:* B. J. GIFFEN. *Seniors:* J. A. MCCLURE, B. SEELEY. *Middlers:* G. BURSLEM, G. M. HOWERTON, H. MCCLENAGHAN, G. L. MORRILL, R. F. POWEL, H. W. RENDALL, C. W. SIDEBOTHAM, J. E. TRIPLETT. *Junior:* J. G. MACHEN.

### NEGATIVE THEORIES OF KNOWLEDGE WITH PROFESSOR ORMOND.

*Graduate Students:* B. J. GIFFEN, J. MEEKER, T. M. POLK. *Seniors:* A. J. MCCARTNEY, H. B. ROBERTS, R. M. SMITH. *Middlers:* H. E. BLAIR, R. A. BLAIR, H. L. BOWLBY, C. C. MCINTIRE, J. R. THOMAS, C. H. YERKES. *Juniors:* J. H. BOAL, E. C. CLEELAND, A. W. GRIGG, M. R. LAIRD, J. G. MACHEN, T. MORGAN, J. A. NESBITT, J. R. PEALE, E. C. PIRES, P. RICHARDS, N. L. VON KRUG, J. L. WEISLEY.

### EPISTEMOLOGY WITH PROFESSOR ORMOND.

*Graduate Students:* L. BERKHOF, S. HATA, L. Z. JOHNSON, T. M. POLK. *Seniors:* G. R. BROWN, A. D. P. GILMOUR, J. HERON, I. E. WALLACE. *Middlers:* H. BROWN, G. BURSLEM, P. MCKEE, H. M.

ROBINSON. *Juniors*: J. M. ESPEY, J. W. HARRIS, J. F. HORN, W. M. HUTCHISON, W. L. MCCORMICK, F. G. MACKINTOSH, W. A. MACKAY, F. R. MARSH, J. H. SCHAEFFER. *Special Students*: T. R. GOOD, H. W. TAYLOR.

PHILOSOPHICAL SEMINAR ON MILL AND SPENCER  
WITH PROFESSOR ORMOND.

*Graduate Student*: B. J. GIFFEN. *Middlers*: G. BURSLEM, H. MARKARIAN, G. VERKUYL, H. M. ROBINSON, J. R. THOMAS.

ADVANCED GENERAL PSYCHOLOGY WITH PROFESSOR BALDWIN.

*Graduate Student*: B. J. GIFFEN. *Seniors*: A. D. P. GILMOUR, J. A. MCCLURE. *Middlers*: G. M. HOWERTON, W. H. TOPPING. *Special Student*: M. L. PHILLIPS.

CHRISTIAN ARCHÆOLOGY WITH PROFESSOR FROTHINGHAM.

*Seniors*: A. L. HALL-QUEST, J. G. NOORDEWIER, R. H. WILSON. *Middler*: C. W. SIDEBOTHAM. *Juniors*: F. R. MARSH, C. F. REED.

ELEMENTARY GREEK WITH DR. HODGE.

*Juniors*: W. R. DODD, J. Y. STEWART. *Special Student*: J. A. HUBBARD.

ADVANCED HEBREW SECTION OF THE JUNIOR CLASS.

O. T. ALLIS, D. C. CHAPIN, E. C. CLEELAND, H. P. DE PREE, C. H. DUDLEY, R. C. FLEMING, A. W. GRIGG, L. GRISWOLD, L. A. HANDLEY, J. F. HORN, H. I. KERR, L. L. KNIGHT, M. R. LAIRD, C. E. MCCARTNEY, J. G. MACHEN, W. A. MACKAY, F. G. MACKINTOSH, W. F. McMILLIN, F. R. MARSH, T. MORGAN, W. C. MUNSON, J. A. NESBITT, J. R. PEALE, E. C. PIRES, P. RICHARDS, L. STEWART, L. H. TRACY, K. L. VON KRUG, W. R. WARD, J. L. WEISLEY.

STUDENTS OF THE UNIVERSITY PURSUING STUDIES IN THE  
SEMINARY.

G. W. ARMS, H. H. BRADLEY, S. HIGINBOTHAM, H. D. V. HUGHES, R. W. KEYES, B. O. SATTERWHITE, W. SINCLAIR, H. F. STAMBAUGH, C. TOWNSEND.

## THE FOUNDING OF THE SEMINARY.

In the year 1809 the proposal to establish a Theological Seminary for the Presbyterian Church was introduced to the General Assembly in the form of an overture from the Presbytery of Philadelphia. The Committee to whom the overture was referred, recommended that three alternate plans be submitted to the presbyteries: the first, to establish one school in some convenient place near the center of the Church; the second, to establish two schools, one in the North, the other in the South, the third, to establish a school within the bounds of each of the synods. The reports from the presbyteries received in 1810 led the General Assembly in that year to decide upon a single school and to appoint a committee to prepare a "Plan for a Theological Seminary," to be reported to the next General Assembly. In 1811 the plan reported was adopted. In 1812 the location of the Seminary was fixed temporarily at Princeton, New Jersey, a Board of Directors was elected, and the Reverend Archibald Alexander, D.D., was appointed Professor of Didactic and Polemic Theology. In 1813, the Reverend Samuel Miller was appointed Professor of Ecclesiastical History and Church Government, and the location at Princeton was made permanent.

The Trustees of the College showed their interest in this settlement by allowing the use of its buildings to the Seminary students, and by offering space on the College campus for the erection of any buildings necessary for the use of the Seminary. They also engaged that there should be no Professor of Theology in the College as long as the Seminary remained in Princeton. The classes were held at first in Dr. Alexander's study, and later for a time in the College buildings.

In 1815, the Assembly determined to erect a hall which should contain both the lecture rooms needed and lodgings for the students. The corner stone of this building, now known as Alexander Hall, was laid in that year, and it was first occupied in the autumn of 1817. It was built upon a tract of land contain-





ALEXANDER HALL  
THE OLD SEMINARY



ing seven acres, which had been purchased for the use of the Seminary. In 1820, the Assembly authorized the professors to appoint an Assistant Teacher of the Oriental Languages of Holy Scripture; and in the same year they appointed to this office Mr. Charles Hodge, a graduate of the Seminary, and a licentiate of the Church. Mr. Hodge accepted the appointment and was ordained. In 1822 he was elected by the General Assembly Professor of Oriental and Biblical Literature. On the twelfth of August, 1812, the first Seminary session, that of 1812—13, commenced. Three students were present. Fourteen were matriculated during the session. In 1822 the Legislature of the State of New Jersey passed an act incorporating the "Trustees of the Theological Seminary of the Presbyterian Church," making this the corporate name of the institution. With this incorporation the Seminary was constituted as at present. During the ninety-one years of its existence, five thousand one hundred and sixty-three students have been matriculated. Of these, two hundred and ninety-seven have entered upon foreign mission work.

## THE DESIGN OF THE SEMINARY.

In the "Plan of the Seminary" as adopted by the General Assembly its design is stated in the following paragraphs:

"The General Assembly, after mature deliberation, has resolved, in reliance on the patronage and blessing of the Great Head of the Church, to establish a new institution consecrated solely to the education of men for the gospel ministry, and to be denominated *The Theological Seminary of the Presbyterian Church in the United States of America*. And to the intent that the true design of the founders of this Institution may be known to the public, both now and in time to come, and especially that this design may, at all times, be distinctly viewed, and sacredly regarded, both by the teachers and the pupils of the Seminary, it is judged proper to make a summary and explicit statement of it.

"It is to form men for the gospel ministry, who shall truly believe, and cordially love, and therefore endeavor to propagate

and defend, in its genuineness, simplicity and fullness, that system of religious belief and practice which is set forth in the Confession of Faith, Catechisms, and Plan of Government and Discipline of the Presbyterian Church; and thus to perpetuate and extend the influence of true evangelical piety and gospel order.

“It is to provide for the Church an adequate supply and succession of able and faithful ministers of the New Testament; workmen that *need not be ashamed*, being qualified *rightly to divide the word of truth*.

“It is to unite in those who shall sustain the ministerial office religion and literature; that piety of the heart which is the fruit only of the renewing and sanctifying grace of God, with solid learning: believing that religion without learning, or learning without religion, in the minister of the gospel, must ultimately prove injurious to the Church.

“It is to afford more advantages than have hitherto been usually possessed by ministers of religion in our country, to cultivate both piety and literature in their preparatory course; piety, by placing it in circumstances favorable to its growth, and by cherishing and regulating its ardour; literature, by affording favorable opportunities for its attainment, and by making its possession indispensable.

“It is to provide for the Church, men who shall be able to defend her faith against infidels, and her doctrines against heretics.

“It is to furnish our congregations with enlightened, humble, zealous, laborious pastors, who shall truly watch for the good of souls, and consider it as their highest honor and happiness to win them to the Saviour, and to build up their several charges in holiness and peace.

“It is to promote harmony and unity of sentiment among the ministers of our Church, by educating a large body of them under the same teachers, and in the same course of study.

“It is to lay the foundation of early and lasting friendship, productive of confidence and mutual assistance in after life among the ministers of religion; which experience shows to be

conducive not only to personal happiness, but to the perfecting of inquiries, researches and publications advantageous to religion.

"It is to preserve the unity of our Church, by educating our ministers in an enlightened attachment not only to the same doctrines, but to the same plan of government.

"It is to bring to the service of the Church genius and talent, when united with piety, however poor or obscure may be their possessor, by furnishing, as far as possible, the means of education and support without expense to the student.

"It is to found a nursery for missionaries to the heathen, and to such as are destitute of the stated preaching of the gospel; in which youth may receive that appropriate training which may lay a foundation for their ultimately becoming eminently qualified for missionary work.

"It is, finally, to endeavor to raise up a succession of men at once *qualified for* and *thoroughly devoted to* the work of the gospel ministry; who, with various endowments, suiting them to different stations in the Church of Christ, may all possess a portion of the spirit of the primitive propagators of the gospel; prepared to make every sacrifice, to endure every hardship, and to render every service which the promotion of pure and undefiled religion may require."

"Every student, before he takes his standing in the Seminary, shall subscribe the following declaration, viz.: 'Deeply impressed with a sense of the importance of improving in knowledge, prudence, and piety, in my preparation for the gospel ministry, I solemnly promise, in a reliance on divine grace, that I will faithfully and diligently attend on all the instructions of this Seminary, and that I will conscientiously and vigilantly observe all the rules and regulations specified in the Plan for its instruction and government, so far as the same relate to the students; and that I will obey all the lawful requisitions, and readily yield to all the wholesome admonitions of the Professors and Directors of the Seminary, while I shall continue a member of it.'"

### TERMS OF ADMISSION.

Every person applying for admission into the Seminary must produce satisfactory written testimonials that he possesses good



natural talents and is of a prudent and discreet deportment, that he is in full communion with some regular church, and that he has passed through a regular course of collegiate study; or, wanting this, he must submit himself to an examination in regard to the branches of literature usually taught in such a course.

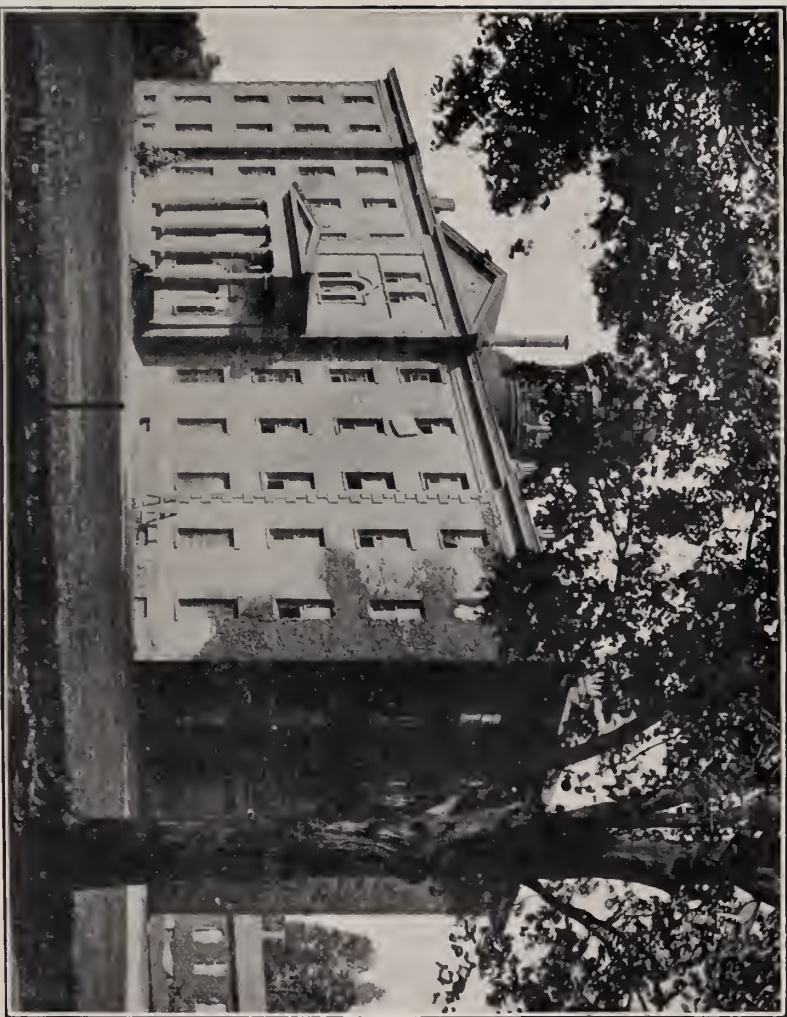
When a student has been received under the care of a presbytery, and has passed with approbation his examination on the studies usually pursued in college, a certificate from the presbytery declaring this fact is received as sufficient to answer every requisition in regard to testimonials.

Students unable to comply with these entrance conditions may nevertheless, on filing a certificate from their presbytery, or the ecclesiastical body under whose care they are as candidates for the gospel ministry, expressing its approval of their entrance upon theological study without further literary preparation, be received into the Seminary, enrolled with the classes and granted the usual certificate on completing the full course; but such students cannot be technically accounted students in full standing, or on completing the course, be enrolled as technically graduates of the institution.

When a student who has been connected with any other theological seminary seeks admission into this, he must produce testimonials of his good standing and regular dismissal before he can be received.

These various testimonials must be presented to the Corresponding Secretary and Assistant Registrar, Dr. Vos, before the applicant for admission can be allowed to matriculate.

The Seminary course is designed to cover three years of special preparation for the ministry, and a full curriculum for the three years is provided, on the completion of which the certificate of graduation is conferred. Students are strongly recommended, when preparing for the Seminary at colleges where opportunity to do so offers, to make a beginning in Hebrew, Theism, Evidences of Christianity, General Apologetics, New Testament Greek, Patristic Greek and Latin, or the like, before entering the Seminary. Those whose previous work in such departments of study is fairly equivalent to any portion of the



BROWN HALL





Seminary curriculum will be provided with advanced work, as is outlined on a subsequent page of this catalogue, and thus enabled materially to increase their theological knowledge, and, if they desire, to enter upon a course of study designed to qualify for the Degree of Bachelor of Divinity.

## COURSE OF STUDY.

### FIRST YEAR.

Old Testament Literature: General Introduction, Special Introduction to the Pentateuch, Hebrew, Sacred Geography and Antiquities, Old Testament History. New Testament Literature: General Introduction, Special Introduction to the Gospels, Exegesis of selected Epistles of Paul. Didactic Theology: Prolegomena and Theology proper. Relations of Philosophy and Science to the Christian Religion: Theism, Theological Encyclopedia, General Introduction to Apologetics. Homiletics. Elocution.

### SECOND YEAR.

Old Testament: Unity of the Book of Genesis, Special Introduction to the Historical and Poetical Books, Exegesis, Biblical Theology. New Testament: Life of Christ and Exegesis of the Gospels. Didactic Theology: Anthropology and Soteriology (Christology). Relations of Philosophy and Science to the Christian Religion: Evidences of Christianity. Church History: Ancient and Mediæval. Government and Discipline of the Church. Homiletics: Criticisms of Sermons, Elocution. Missions.

### THIRD YEAR.

Old Testament: Special Introduction to the Prophets, Exegesis. New Testament: Acts of the Apostles, Special Introduction to the Epistles, Biblical Theology. Didactic Theology: Soteriology (Pneumatology) and Eschatology. Church History: Mediæval and Modern. Relations of Philosophy and Science to the Christian Religion: Christian Ethics and Christian Sociology.

Church Government and Discipline; Pastoral Care; Ordinances of Worship; Homiletical Criticism and Analysis of Texts; Elocution. Missions.

#### FOURTH YEAR.

The regular course is completed in three years; but students may with great advantage continue to pursue their studies in the Seminary for a longer period. It is not thought best to prescribe a fixed course of study for graduates. Each is at liberty to devote himself to those branches of theological learning for which he has the greatest aptitude, or which he judges to be most necessary or profitable to himself. Accordingly graduate students may make a selection from the extra-curriculum courses which are provided in each department, or they may individually conduct original investigations under the direction and with the advice of the professors and with the aid of the library, or with the approval of the Faculty they may attend the lectures and recitations of such of the regular classes as involve new work. The equivalent of at least twelve hours of class-room work a week is required of students who are admitted to the privileges of the fourth year.

#### LECTURES AND RECITATIONS.

The Junior Class averages each week of the session five exercises in Hebrew, one-half in Introduction to the Old Testament, one and a half in Old Testament History, one in Introduction to the New Testament, one in Exegesis of Paul's Epistles, two in Didactic Theology, two in Theism, one in Apologetics, one in Homiletics and one in Elocution.

The Middle Class has one exercise and a half a week in Introduction to the Old Testament, one and a half in Exegesis of the Psalms, two in Biblical Theology of the Old Testament, two in the Life of Christ and Exegesis of the Gospels, three in Church History, two in Didactic Theology, one in Evidences of Christianity, two in Homiletics and Church Government, one in Elocution and on alternate years one in Missions.

The Senior Class has one exercise a week in Introduction to the Old Testament and one in Exegesis of the Prophets, two in Apostolic History and Exegesis of the Epistles, two in Biblical Theology of the New Testament, three in Church History, two in Didactic Theology, two in Christian Ethics and Christian Sociology, two in Homiletic and Pastoral Theology, one in Elocution, and on alternate years one in Missions.

## DEPARTMENTS OF INSTRUCTION.

In order to convey a clearer idea of what is actually taught in the Seminary, the following more explicit statements are made respecting the instruction given :

### THE RELATIONS OF PHILOSOPHY AND SCIENCE TO THE CHRISTIAN RELIGION.

The aim of this course is to exhibit positively the reasonableness of Christianity as the supernatural and the final religion.

The Junior year is devoted to a general introduction to Apologetics ; a critique of the reason, involving the discussion of its reality, its trustworthiness, and its limitations ; and the philosophy of religion, under which are considered the definition of religion, its nature, its origin, its reality and its criteria.

The Middle year is given to the evidences of Christianity, experimental, internal, external, collateral, and that from the character and resurrection of Christ ; and to the proof that the Scriptures are the divinely inspired record of this religion.

The Senior year is divided between Christian Ethics and Christian Sociology. Under the former are discussed Old Testament ethics, New Testament ethics, and the argument for Christianity from its ethical system. Under the latter are considered the teachings of Christianity as to the family, the nation and the school ; and the argument for Christianity from the superiority of its social system.

A Post-Graduate course is also offered in Philosophical Apologetics. This develops the arguments for Christianity from

comparative religion, from the philosophy of history, and from the philosophy of Christianity.

The whole subject of Theism, historical, constructive, and polemic, is discussed by President Patton, who delivers two lectures a week on this topic throughout the Junior year.

#### HEBREW.

Hebrew is taught throughout the course. But the grammatical study of the language as such is confined mainly to the first year, in which a larger portion of time is devoted to it than to any other single branch. The Junior Class is trained not simply in translation and parsing, but in the derivation of words and the comparison of synonyms and in converting English into Hebrew. A beginning is also made the first year in the application of the knowledge of the language to the work of exposition, which is carried out more fully in the subsequent years of the course.

#### INTRODUCTION TO THE SCRIPTURES.

General Introduction to the Old and New Testament embraces the subjects of the Canon, the Original Languages of Scripture, Ancient Manuscripts and Versions, Sacred Criticism, and the History and Principles of Scriptural Interpretation.

Special Introduction embraces an account of each book severally, its authorship, integrity, design and structure, together with a general statement of its contents, and a more particular examination of the most interesting and important questions relating to its criticism and interpretation. The course is intended to include at least a general survey of every book in the Bible.

#### THE OLD TESTAMENT.

A general and comprehensive survey is presented of the various books of the Old Testament, in their individual plan and contents, and in their relations to one another and to the general scheme of which they form a part. The most important questions in criticism and exegesis that arise in each are considered, with a special reference to the gradual unfolding of revealed



HODGE HALL





truth, the preparation for the coming of Christ, and the fuller disclosure of the New Testament. Particular attention is paid to the interpretation of typical facts and institutions, and to tracing the progressive scheme of prophecy. The Middle Class is also engaged in more detailed study of the Psalms and the Senior Class in that of the Prophets.

#### THE NEW TESTAMENT.

In the study of the New Testament an acquaintance with ordinary Greek is assumed; but careful attention is paid to the peculiarities of the Hellenistic dialect, particularly as employed by the New Testament writers. The exegesis of the New Testament is begun with the Junior Class by the study of the Epistles of Paul, and lectures are delivered on topics belonging to General Introduction. The life of Christ is exhibited in its several periods, with a careful analysis of the different Gospels, their mutual relations, their individual characteristics, and the harmony of their respective narratives. The Acts of the Apostles is studied both exegetically and topically, with prominent reference to the life and labors of the Apostle Paul and the early planting of the Christian Church. Special introductions to the various Epistles are inserted in their proper chronological order.

#### BIBLICAL HISTORY.

Old Testament History is studied as a history of events, the unfolding of the import of these events in the history of revelation being relegated to the department of Biblical Theology. The Biblical narratives themselves are studied as the source; but the course is supplemented by lectures which deal with the data furnished by the contemporary monuments of Babylon, Assyria and Egypt. Geography is also studied, so far as it pertains to the history. In like manner New Testament History, including the life of Christ and the work of the Apostles, is studied in connection with the books of the New Testament.

#### BIBLICAL THEOLOGY.

An equal place is assigned in the course to Old Testament and New Testament Theology. The point of view is that of the

history of revelation; and in the various periods of divine economy both the contents and the form of revelation receive attention. The instruction is by lectures supplemented by a textbook. In Old Testament Theology the plan and division adopted by Oehler are followed, with fuller discussion of the patriarchal period. A similar method is pursued in the treatment of New Testament Theology.

#### CHURCH HISTORY.

The instruction in general Church History is by lectures and recitations with reference to sources and literature. While the main design of the course is to set forth historically the career of the Christian Church in its relations to the other elements of the life of the world, the development of Christian doctrine and the interior life of the church are also presented. Special treatises in each period are recommended for collateral study, and outlines of the course of lectures are provided to aid the students in taking notes.

#### SYSTEMATIC THEOLOGY.

Systematic Theology is studied throughout the course. The doctrines of Theology are presented didactically, historically, and polemically. The order of topics pursued is: The nature, forms, and sources of Theology; the being of God, His nature and attributes; the Trinity; the divinity of Christ; the Holy Spirit; the decrees of God; creation; providence; miracles; the origin, nature and primitive state of man; the covenant with Adam; the fall; sin; imputation; original sin; inability; the covenant of grace; the person of Christ; His offices; the nature, necessity, perfection, and extent of the atonement; His kingdom; His humiliation and exaltation; vocation; regeneration; faith; justification; sanctification; the law of God; the sacraments; eschatology.

#### ECCLESIASTICAL, HOMILETICAL AND PASTORAL THEOLOGY.

The study of Homiletics begins in the Junior year. The method of instruction is by lectures. The course includes: The proper idea and essential elements of a sermon; the classifica-



tion of sermons; the choice of texts; origination of thought; invention; assimilation; the drawing of the theme; analysis of texts and the different classes of division; practical exercise in the making of divisions, with criticism of sermons delivered in presence of a professor.

In the Middle year the study of Ecclesiastical Theology is begun. Instruction is by lecture. Subjects: The true idea of the Church; the organization of the Church; the Head of the Church; the claim of Papal supremacy; the officers of the Church, etc. The course of lectures on Homiletics is continued in the Middle year and includes lectures on introductions, on methods of treating the different heads of a discourse; and on illustrations in preaching, together with practical exercises in preaching and criticisms by a professor.

The Senior Class is instructed in Pastoral Theology by lectures. The study of Ecclesiastical Theology is continued, including lectures on the apostolic succession, priesthood of the ministry, ordination, the ruling elder, church discipline, etc.

#### MISSIONS.

The course on Missions treats of the philosophy, Biblical basis, history and Scriptural norm of missions, and affords instruction in methods of awakening, developing and directing the Church's interest in foreign missions. It comprehends the study of the place of foreign missions in comparative religion; the universalistic element in Biblical theology, the history of missions from the close of the Apostolic period to the evangelical revival of the eighteenth century; the history, methods and results of Protestant missions; practical theology in relation to foreign missions. The course is conducted biennially in alternate years, the Middle and Senior classes being united for the purpose. It has a place in the schedule for the session of 1903-04.

#### RHETORICAL EXERCISES IN SERMONIZING.

DR. DEWITT and DR. GREENE preside at the weekly preaching of the Middle and Junior classes respectively. Each member of these classes is, in his turn, expected to deliver original discourses, *memoriter*.

The weekly preaching of the Senior Class is under the direction of DR. MARTIN, who also conducts exercises with the class in analysis of texts, and in writing and criticising sermons.

MR. HENRY W. SMITH, the instructor in elocution, is in attendance throughout the session, and gives a thorough course of teaching in this department, meeting the students both singly and in classes, and combining a careful discussion of principles with abundant and varied vocal exercises.

Every student is required, prior to graduation, to exhibit to the Professor of Homiletical Instruction two lectures and four popular sermons, which shall be approved by him.

## EXTRA-CURRICULUM COURSES OF STUDY.

On application to the authorities of the University, students have the privilege of attending lectures in that institution, so far as these do not interfere with their regular duties in the Seminary. Under prescribed conditions, such work qualifies for the degree of Master of Arts.

In addition to the studies provided by the curriculum of the Seminary, collateral courses in the several departments are offered to the students, which enable them to devote larger attention to favorite studies and to lay broad foundations in knowledge. These collateral courses run from October 1st to April 15th, unless otherwise announced by the professors who offer them, and are concluded by an examination. The regulations respecting attendance and diligence which govern the ordinary work of the Seminary apply equally to these extra-curriculum studies, but it is optional with each student whether he undertakes these courses or not. Under prescribed conditions, extra-curriculum work qualifies for the degree of Bachelor of Divinity.

Students who, in college or other seminaries, have fully traversed the ground covered by any part of the curriculum of this institution, and have attained due proficiency in these branches, are privileged and encouraged to substitute extra-curriculum work in the place of these studies.



STUART HALL



Students who propose to undertake extra-curriculum work, whether it be intended merely to enrich the ordinary course or to serve as a substitute for work already done or to qualify for the degree of Master of Arts or Bachelor of Divinity, must make their election known to the Assistant Registrar of the Faculty in writing on or before the first day of October.

#### THE DEGREE OF MASTER OF ARTS.

Matriculated students of the Seminary, who hold the degree of Bachelor of Arts from Princeton University or any institution approved by it, may enter the Graduate Department of the University by matriculation and become candidates for the degree of Master of Arts. The degree may be conferred upon students thus qualified after they shall have taken graduate courses in the University involving at least two hours a week each term for four terms, that is for two years when the terms are consecutive, and passed satisfactory examinations upon these courses, and such extra reading as may be assigned.

During the session of 1901-1902 the work prescribed for the degree was completed under these conditions by W. C. Erdman, S. McDowell, and C. L. Neibel, graduates of Princeton University; W. C. Brewer, a graduate of Coe College, A. B. Dodd, a graduate of Westminster College, Mo., P. Doltz and D. A. Thompson, graduates of Macalester College, D. H. Ferrell, a graduate of Tarkio College, A. L. Hall-Quest, a graduate of Augustana College, D. H. Hare, a graduate of Emporia College, Joseph E. James, a graduate of Oxford College, W. B. Johnson and B. F. Paist, Jr., graduates of Ursinus College, R. G. Leetch, a graduate of Lafayette College, J. W. Purcell, a graduate of Kansas Normal College, C. E. Rath, a graduate of Lake Forest University, and E. A. Van Nuys, a graduate of Franklin College. The degrees were duly conferred by the Trustees of the University.

#### THE DEGREE OF BACHELOR OF DIVINITY.

This degree may be conferred on a Bachelor of Arts of any college approved by the Faculty, who shall also have completed a three years' course of theological study in any similarly ap-

proved institution or in this Seminary, and a one year's course of extra-curriculum study in theology at this Seminary. This course of special study shall be arranged, and the examinations shall be conducted, by the Faculty with the concurrence of the Directors.

#### REGULATIONS.

1. *Preliminary Qualifications.*—Every applicant must be, as above required, a graduate of an approved college and have completed a three years' course of theological study in an approved institution or be pursuing the regular course in the Seminary.

II. *Conditions Governing the Course.*—The equivalent of at least twelve hours of class-room work a week for one Seminary year is required.

The studies may be pursued in part as electives during the three years of the regular course, or in a small amount and in certain cases only as private study during vacation, or in a fourth year.

No undergraduate student shall take more than four hours a week of these studies beyond the number of hours allotted to his class in the regular curriculum.

A student who is conditioned in any department, or whose progress in study has been unsatisfactory, shall not be allowed to take extra-curriculum work with a view to the degree.

Examinations shall be held on these studies, as on the studies of the regular undergraduate course. A student who attends advanced courses but does not offer himself for examination or fails to stand the test satisfactorily, shall receive no credit therefor. Nor shall advanced work be credited to a student who does not pass meritoriously in all the studies of the required course.

The record of the candidate, his thesis and examinations must be decidedly meritorious.

III. *Chief Subject of Study.*—Every candidate shall at the opening of the Seminary year and on or before the first day of October announce in writing to the Assistant Registrar of the



Faculty which one of the following five departments he selects for his chief subject of study :

1. OLD TESTAMENT.

Principal Studies : (a) Introduction and Criticism, literary, historical and textual, 2-3 hours ; (b) The special Exegetical Study of selected books of the Old Testament, 2-3 hours ; (c) Old Testament History and the related Contemporary History ; (d) Biblical Theology of the Old Testament. And as subsidiary studies, (e) One or more of the Semitic Languages ; (f) Archæology of the Old Testament.

2. NEW TESTAMENT.

Principal Studies : (a) Introduction and Criticism, 2-3 hours ; (b) The special Exegetical Study of selected books or epistles of the New Testament, 2-3 hours ; (c) Biblical Theology of the New Testament ; (d) Post-apostolic Literature. And as subsidiary studies, (e) New Testament Greek ; (f) Syriac.

3. SYSTEMATIC THEOLOGY.

Principal Studies : (a) Dogmatic Theology and Symbolics, 3 hours ; (b) Apologetic Theology and Comparative Religion, 3 hours ; (c) Biblical Theology of the Old and New Testaments ; (d) The History of Doctrine.

4. CHURCH HISTORY.

Principal Studies : (a) Biblical History of the Old and New Testaments ; (b) Patristic Theology ; (c) Symbolics ; (d) History of Doctrine ; (e) Special Study in the History of the Christian Church in some one of its chief periods, 3 hours ; (f) Ecclesiology.

5. ECCLESIASTICAL THEOLOGY.

Principal Studies : (a) The History of Preaching, 3 hours ; (b) Ecclesiology of the New Testament ; (c) The History of special forms of Church Polity ; (d) Liturgics ; (e) The Composition and Delivery of Sermons, a course for graduates of seminaries other than Princeton.

## 6. SEMITIC PHILOLOGY.

Principal Studies: The eight hours may be devoted exclusively to one or expended upon several of the Semitic languages. As subsidiary studies Coptic, Hellenistic Greek, Textual Criticism are especially recommended.

IV. *Division of Time*.—Eight of the required twelve hours shall be given to the principal studies of the department which has been elected, and the remaining four hours shall be spent upon the subsidiary studies offered from time to time in that department or chosen from the principal or subsidiary branches of the other departments. Or as many as three of the four hours of subsidiary work may be devoted to studies selected from the University courses.

Under the direction of the Faculty, however, a candidate for this degree may be permitted to do an amount of work equivalent to twelve hours upon any two or more of the subjects offered in any department, and it shall qualify him for the degree, after such thesis or examination as the Faculty may approve.

On the fulfillment of these conditions, the degree will be conferred upon the candidate at the ensuing annual commencement. Only in exceptional cases and for reasons deemed sufficient by the Faculty will the degree be conferred *in absentia*.

During the session of 1901-02 Albert Baldwin Dodd, a graduate of Westminster College, Mo.; Paul Doltz, a graduate of Macalester College; William Brower Johnson and Benjamin Franklin Paist, Jr., graduates of Ursinus College; Ebenezer Edwin Jones, a graduate of Ripon College; William Roderick McKay, a graduate of Dalhousie College; Charles Anderson Mitchell, a graduate of Bellevue College; Nathaniel Smith Reeves and George Jeffrey Russell, graduates of Princeton University; Henry Brown Searight, a graduate of Southwestern Presbyterian University; and George Shippen Stark, a graduate of Lincoln University, all of whom are graduates of the Seminary, completed the work prescribed for the degree of Bachelor of Divinity. The degree was conferred upon them at the last annual Commencement.





MILLER CHAPEL



## EXTRA-CURRICULUM COURSES IN SEMITIC PHILOLOGY AND TEXTUAL CRITICISM.

### Aramaic.

Grammar of Biblical Aramaic; Biblical Aramaic of Ezra and Daniel. Aramaic of the Targums. Merx' *Chrestomathia Targumica*. Prætorius' *Das Targum Joshua*. Dalman's *Grammatik des Jüdisch-palästinischen Aramäisch*, and *Aramäische Dialectproben*.

### New Hebrew.

Strack und Siegfried's *Grammatik*. Strack's edition of Pirke Aboth, Shabbath, Yoma, and Abodazara. Fragments of Ben Sira.

### Syriac.

Wilson's *Grammar and Manual*; *The New Testament*. Wright's edition of Joshua the Stylite; Phillip's Addai the Apostle: Gottheil's edition of *A Treatise on Syriac Grammar* by Mar Elia of Sobha; Baethgen's *Sindban*. Cureton's *Spicilegium Syriacum*; Wright's *Apocryphal Acts of the Apostles*; Raabe's *Petrus der Iberer*. Overbeck's *Opera Selecta e Codicibus Syriacis*; Hoffmann's *Julian der Abtrünnige*; Feldmann's *Syrische Wechsellieder von Narses*; Bickell's *Ephraemi Syri Carmina*.

### Assyrian.

*Grammar and Chrestomathy*; Delitzsch's *Assyrian Grammar*; *Assyrische Lesestücke*. *Historical Inscriptions*: Abel und Winckler's *Keilinschriften zum Gebrauch bei Vorlesungen*. *Epic Poetry and Commercial Documents*: Delitzsch's *Assyrische Lesestücke*. Strassmaier's *Inschriften von Nabonidus*.

### Arabic.

Socin's *Grammar*; Brünnow's *Chrestomathy*; selections from the Bible and Dieterici's *Thier und Mensch*. The Koran, with Beidawi's *Commentary* in the edition of Fleischer; Wright's *Arabic Syntax*. Ibn Hisham's *Life of Muhammed*; Fleischer's *Abulfedae Historia Anteislamica*.

Selections from the 1001 Nights; Septem Mo'allakat; Nöldeke und Müller's *Delectus Veterum Carminum Arabicorum*.

#### Ethiopic.

Practorius' *Grammatica Aethiopica*. Selections from Dillmann's *Octateuch*. Dillmann's *Chrestomathia*, *Ascensio Isaiae* and *Apocrypha*. Bachmann's *Lex Abyssinorum*.

#### Semitic Palaeography.

Schröder's *Phönizische Sprache*; Lidsbarski's *Handbuch der Nordsemitischen Epigraphik*; selected inscriptions from the *Codex Inscriptionum Semiticarum*. Moabite Stone. Sendschirli Inscriptions. Madden's *Jewish Coins*. Comparative Semitic Grammar. Wright's and Zimmern's *Grammars*.

Coptic and Greek are included, since they form part of the necessary equipment of the textual critic.

#### Coptic.

Steindorff's *Koptische Grammatik*; selections from the New Testament and the Minor Prophets. Amélineau's *Histoire du Patriarche Copte Isaac*; Lagarde's *Pentateuch*.

#### Greek.

Septuagint. Josephus. Philo. Apocryphal Books of the Old and New Testaments.

#### Textual Criticism of the Old Testament.

The Pentateuch; the historical books; the prophetic books; the poetical books.

Courses of study, some of them accompanied by lectures, will also eventually be furnished in the history, religion, and literature of the ancient nations that were brought into contact with the Israelites and influenced their development.

## SPECIAL LECTURES.

The foundation created by L. P. Stone, Esq., provides for an annual course of lectures upon some topic kindred to theological studies. The Students' Lectureship on Missions had its incep-

tion in the minds of the undergraduates of the Seminary, and its endowment was secured largely by their efforts. It provides for an annual course of lectures on some topic connected with missions of practical importance to those who are looking forward to the foreign work.

## FELLOWSHIPS AND PRIZES.

Three fellowships have been established—one in Old Testament studies, one in New Testament studies, and one in studies subject to annual designation by the Faculty. Each of these fellowships is governed by the following general rules: Unless otherwise announced, it is awarded to that member of the graduating class who stands highest in a special examination held in April, and who, in addition, prepares the best thesis on an assigned theme, which he presents on or before the first day of April. But no student can receive a fellowship who is not a Bachelor or Master of Arts of some approved college or university; and it is not awarded to one who has not spent at least two years in this Seminary, nor unless he passes a satisfactory examination on all the studies of the regular course, nor unless his specified examination and thesis are decidedly meritorious. The thesis must be signed by an assumed name, and accompanied by a sealed envelope containing the real name of its author. According to convenience, the thesis may be handed to the Librarian of the Seminary, or left at the house of the Professor in charge of the department. The fellows have the privilege of studying either at Princeton or at an approved European university under the direction of the Faculty of the Seminary. Fellows in residence at a foreign school of learning must secure the approval of the Faculty on the course of study which they desire to pursue, and report from time to time to the head of the department within which the fellowship which they hold has been conferred.

### GEORGE S. GREEN FELLOWSHIP.

This fellowship was founded in 1879 by George S. Green, Esq., of Trenton, N. J., for the encouragement of advanced study

in Old Testament literature. It yields \$600 in quarterly payments. The subject of the thesis for this year is: Old Testament Prophecies concerning Egypt and Babylon, their form and their fulfillment. The examination will be upon the Hebrew of the Senior year.

The subject of the thesis for next year is: The Speaker in the Psalms. The examination will be upon the exegesis of the first twenty-five psalms and the Hebrew of the Senior year.

#### ALUMNI FELLOWSHIP.

The Alumni fellowship in New Testament studies was established in 1889 by gifts from the graduates of the Seminary, and rests on a fund which now amounts to about seven thousand dollars. The Archibald Robertson scholarship was founded by Mrs. Robertson, of New York City, by the gift of five thousand dollars, with the view of encouraging high attainments in some branch of theological learning. For the present it has been arranged that the scholarship shall be awarded to the holder of the Alumni fellowship. The combined funds now yield about \$500, which is paid to the fellow and scholar in quarterly installments.

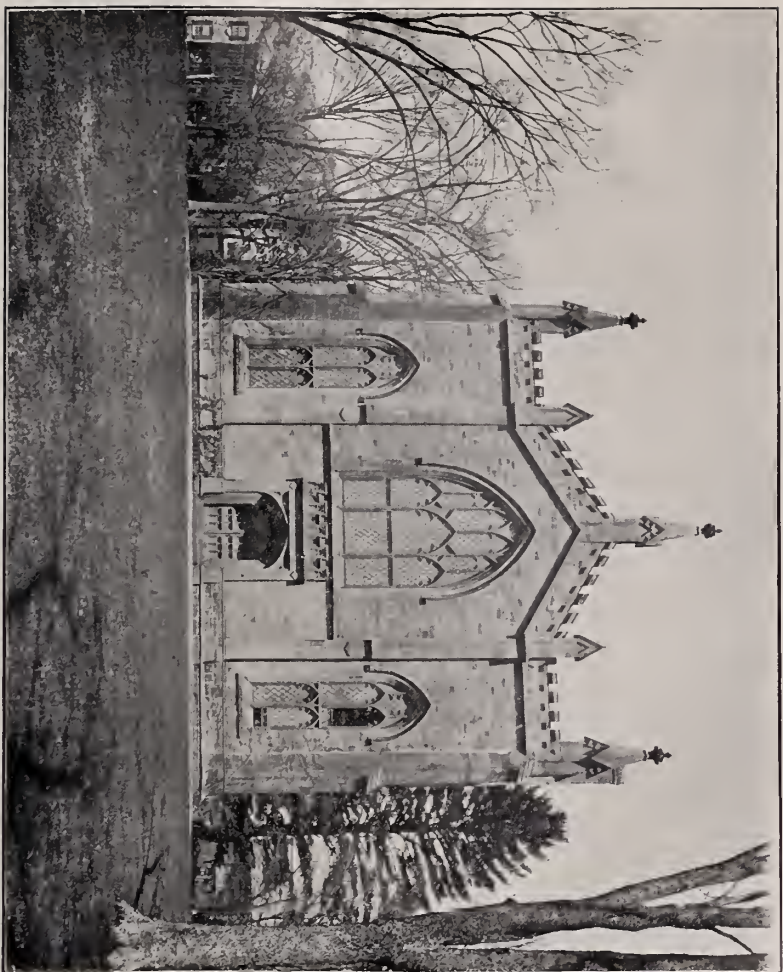
The subject for the thesis this year is: The Textual Transmission, Sources and Purpose of The Acts in their Bearing on its Date and Authorship. The examination will be upon the exegesis of the book.

The subject for next year is: The Pauline Doctrine of the Contrast between Flesh and Spirit in its Christological and Soteriological Significance.

#### WILLIAM HENRY GREEN FELLOWSHIP.

By bequest of the Reverend Professor William Henry Green, a fellowship was founded in 1900. It is not permanently attached to any one department of the curriculum, but the department in which it is competed for and enjoyed is designated by the Faculty one year in advance. The foundation is ten thousand dollars, and the annual income accruing from this fund, amounting at present to about \$400, is paid to the holder





THE OLD LIBRARY





of the fellowship in quarterly installments. The thesis must not contain less than ten thousand words nor more than twenty thousand.

The fellowship will be conferred this year in the department of Didactic and Polemic Theology. The subject for the thesis is: The Will in its Theological Relations. The examination will be upon the Didactic Theology of the Seminary course, and Edwards' "Inquiry into the Modern Prevailing Notions of the Freedom of the Will."

The fellowship will be conferred next year in the department of Apologetics. The subject of the thesis is: The Idea of Christianity as affected by the Modern Theory of Evolution. The examination will be upon the Apologetics of the Seminary course, including Theism, and on Professor John Caird's book on the Philosophy of Religion.

#### BIBLICAL PRIZES.

The prizes offered by Mr. Robert Carter are continued by his family: fifty dollars' worth of books will be presented to that member of the Senior Class who shall prepare the best thesis on an assigned subject in Old Testament literature or exegesis. The second and third in merit will each be presented with ten dollars' worth of books.

The Rev. Horace C. Stanton, Ph.D., D.D., an alumnus of the Seminary, has founded the Benjamin Stanton prize in memory of his father, which is open to competition to members of the Middle Class: fifty dollars will be awarded for the best thesis on an assigned subject in Old Testament literature or exegesis.

Messrs. Charles Scribner's Sons offer fifty dollars' worth of their publications to that member of the Senior Class who shall prepare the best thesis on an assigned subject in New Testament literature or exegesis. The second and third in merit will each be presented with ten dollars' worth of their publications.

Mr. Alexander Maitland, of New York, has founded the Robert L. Maitland prize in memory of his father, which is open to competition to members of the Middle Class; one hundred

dollars will be given for the best exegesis of a passage in the New Testament, and fifty dollars for the second.

The second Carter prize was awarded last year to Jonathan Wesley Purcell; the first Scribner prize to Shohkichi Hata; the Stanton prize to Raymond Hiram Wilson; the first Maitland prize to Warren Nelson Nevius, and the second to Alec Orm Macdonald.

The themes assigned for the present Seminary year are:

For the Carter prizes: The Exegesis of Malachi iii. 1-6, 19-24.

For the Stanton prize: The Relation of Judg. i. 1-ii. 5 to the account of the Conquest given in the Book of Joshua.

For the Scribner prizes: The Petrine Conception of the Person of Christ. Next year the subject will be The Doctrine of Sin in the Writings of John.

For the Maitland prizes: The Exegesis of Phil. ii. 1-11. For next year the subject will be Critical Exegesis of John i. 1-18.

All essays competing for prizes must be handed in on or before April 1st.

The prizes are accessible only to students who are taking the full regular course.

## RELIGIOUS EXERCISES.

Daily prayers, which every student is expected to attend, are conducted in the morning by members of the Senior Class, and in the evening by the professors.

On Sabbath mornings the professors preach in rotation in the Seminary Chapel. In the afternoon a Conference is held in the Oratory, at which the professors conduct the discourse on a subject previously announced, and the students conduct the devotional exercises.

A meeting for devotion and for instruction in general lines of Christian activity is held every Wednesday evening by the students. Addresses are delivered by men prominent in religious work. The meeting on the first Wednesday evening of each month is the concert of prayer for missions and is under the direction of the professors. At the missionary meetings during

the session of 1901—02 addresses were delivered by the Rev. Francis J. Newton, M.D., of India, Rev. Peter Z. Easton, formerly of Persia, Rev. Horace G. Underwood, D.D., of Korea, H. M. McCandliss, M.D., of Hainan, Rev. John Dixon, D.D., Assistant Secretary of the Board of Home Missions, Mr. Robert E. Speer, Secretary of the Board of Foreign Missions, and Rev. S. Hall Young, D.D., of Alaska. Various other meetings for devotion or mutual exhortation are maintained either by the students as a body, or by each class separately, or by the graduates of the several colleges, etc.

Abundant opportunities for active usefulness and observation of pastoral life are afforded in Princeton and its vicinity. A large number of students regularly engage in the conduct of religious meetings, in Sunday School instruction, and in other kinds of Christian work.

## GENERAL INFORMATION.

### LIBRARY.

The Library, which is in the two buildings erected for it in 1843 and 1879 by the late James Lenox, LL.D., of New York, now contains 70,400 bound volumes, chiefly theological, including the libraries of Drs. Ashbel Green, John M. Krebs, John Breckinridge, etc.; the valuable library of Dr. J. Addison Alexander, the gift of Messrs. R. L. and A. Stuart; 2,800 volumes of the library of the late Prof. Wm. Henry Green, bequeathed by him to the Seminary; a remarkably full collection of works on the Baptist controversy, embracing over 2,000 volumes and



3,000 pamphlets, gathered and presented by the late Mr. Samuel Agnew, of Philadelphia; a collection of 2,000 volumes of Puritan theology, presented by friends of the Seminary, also 1,210 volumes from the library of the late Professor Samuel Miller, presented by his great-great-grandson, Samuel Miller Breckinridge Long, in memory of Judge Samuel Miller Breckinridge. In addition to the bound volumes already mentioned, the Library

possesses 28,400 pamphlets, including the large and unique collection presented by the Rev. Dr. Sprague. The Library has a fund of ten thousand dollars from the generosity of the late Messrs. R. L. and A. Stuart, and from the estate of John C.



Green, Esq., an additional fund of twenty-five thousand dollars, whose annual proceeds are devoted to its maintenance and increase; a fund of one thousand dollars given by the late Rev. Dr. Samuel M. Hamill, of which the income is for the purchase of books on foreign missions; also a fund of three thousand dollars, given by Mrs. R. L. Kennedy, of Philadelphia, the income of which is for the purchase of books on church history.

The Library is open three hours on Saturday and five hours every other week day for reading and consultation, and for drawing of books. Certain text-books may be kept out during the entire term.

The Library staff consists of the librarian, Mr. Edward W. Rand, assistant to the librarian, and Miss C. M. Alexander, cataloguer.

Students are also entitled to the free use of the Library of the University.

The reading room is well supplied with the leading newspapers and periodicals. It is open to all the students.

#### STUART HALL.

This admirable structure, erected by Messrs. R. L. and A. Stuart in 1876, affords most ample and complete accommodations in the way of lecture-rooms and apartments devoted to other public uses of the institution.

#### DORMITORIES.

Alexander Hall, long known as the Old Seminary, was the first building erected by the Presbyterian Church in the United States for seminary purposes. It was first occupied by the stu-



PARLOR OF ALEXANDER HALL  
THE OLD ORATORY

dents in the fall of 1817. In it the rooms, whether intended for one occupant or two, are connected with a separate bed-room.



Brown Hall is a memorial of the munificence of Mrs. Isabella Brown, of Baltimore. The corner stone was laid by the Moderator of the General Assembly on the 21st of May, 1864, and it was occupied in the fall of 1865. It is the dormitory of single rooms. They are well lighted, easily ventilated and commodious.

Hodge Hall, built by money bequeathed by Mrs. Mary Stuart, widow of Mr. Robert L. Stuart, of New York, was completed during the summer of 1893. The rooms are in suites, each study having a separate, connecting bed-chamber, or, in the few cases where the study is to be shared by two occupants, a separate sleeping apartment for each.

Each of these dormitories is provided with fire escapes and contains bath rooms and a parlor.

#### ROOMS.

The rooms in the several dormitories are furnished with bedstead, mattress, pillows, bureau, washstand, chairs, table, looking-glass, book-case, and either a clothes-press or a closet. Whatever may be needed or desired beyond this general provision must be obtained by the students themselves.

Every student is provided with a room either in the dormitories or, in case they are full, in the town. The drawing for vacant rooms in the dormitories by entering students takes place at 3 P. M. on the first day of the session. A double room will be assigned previous to the opening day to accepted students who wish to room together, if they make application either in person or by letter.

#### EXPENSES.

There is no charge for tuition or room rent. The only fees required of students are \$10 for the general expense fund, to pay the cost of warming and lighting the public rooms, the attendance of servants, etc., and \$2 for the use of the Library and reading room. Board can be obtained in clubs at \$3.50 per week; in private families for from \$3 to \$5. Fuel costs from \$10 to \$15 per annum, and washing \$1.50 per month. Total of necessary expenses, outside of text-books, for the Seminary year, \$160.

Books can be bought at a liberal discount, and some class books are provided in the library. Gas-light may be had in the dormitories at the option of the student.

#### AID.

Deserving students, whose circumstances require it, receive aid to a limited extent from the scholarships of the Seminary, and from special funds contributed for this purpose. Students needing aid should apply first to the Board of Education through their presbyteries. If the Board's scholarship should prove insufficient, an additional sum will be granted from the scholarship funds of the Seminary. Application for aid from the scholarship fund should be made to Dr. DeWitt.

Students are advised not to engage in teaching or other distracting occupations during term time, with a view to self-support. This is found to interfere seriously with their attention to study, and is intended to be rendered unnecessary by the aid which they may receive from the aforementioned sources.

#### CARE IN SICKNESS.

In case of severe illness, the student has admission to the Isabella McCosh Infirmary, in which one bed has been fully and another partially endowed in behalf of the Seminary. The endowment does not cover the expenses for food, nursing and medical attendance.

#### REPORTS TO PRESBYTERIES.

Annual reports are sent to presbyteries of the attendance of students under their care upon the exercises of the Seminary. In case of deficiency in scholarship this also is reported.

#### EXAMINATIONS.

The annual examinations are conducted in writing and the results are submitted to the Committee on Examination and Visitation appointed by the Board of Directors. The Committee for the present session consists of the Directors, whose term of office expires in May, 1903, with the Rev. Howard Duffield, D.D., chairman, and the Rev. Samuel T. Lowrie, D.D., secretary.





LENON LIBRARY



The mid-year examinations will be held on Saturday, January 10th, and the final examinations will begin on Wednesday, April 22nd, and be continued until Friday of the following week. Students who are absent from the examinations of their class, or who fail to pass this test in a satisfactory manner, must submit to an examination before the second Tuesday of the ensuing October, or lose their standing in the Seminary. The examinations necessary for this purpose are held during the last week of September and the first week of October, according to a published schedule.

#### THE ACADEMIC YEAR

opens on the third Thursday of September, and closes on the Tuesday before the second Saturday in May.

New students matriculate when they present the prescribed credentials to the Assistant Registrar. The drawing for rooms by newly matriculated students takes place in Hodge Hall, at 3 o'clock in the afternoon of the first day of the session. The opening address is delivered in Miller Chapel at 11 o'clock, A. M., on the following day.

The Board of Directors holds two stated meetings each year; the first on the second Tuesday in October, the second on the Monday before the second Saturday in May. Both begin at 2 P. M. The Board of Trustees also holds two stated meetings annually; the first on the second Tuesday in November, and the second on the Tuesday before the second Saturday in May. Both begin at 3 P. M.

The annual sermon at the close of the session will be preached on Sabbath, May 3rd, by the Rev. Howard Duffield, D.D., or in case of his absence, by the Rev. William L. McEwan, D.D. At this service the sacrament of the Lord's Supper will be administered.

The usual diplomas will be conferred on the next graduating class on Tuesday, May 5th, in the presence of the Board of Directors, when the students will be dismissed with an address by Rev. Edward B. Hodge, D.D., or Mr. Logan C. Murray, his alternate.

## VACATIONS.

The long summer vacation presents a suitable opportunity for engaging in teaching, or in other remunerative occupations. Students are particularly encouraged to spend their vacation in practical Christian work, under the direction, or with the approbation of their Pastors, Presbyteries, or the Boards of the Church. This will furnish a most important supplement to the training of the Seminary, affording an experience and familiarity with the active duties of the ministry, which will be invaluable as a part of the preparation for the sacred office.

A recess of two weeks is also taken at the Christmas holidays.

## LOCATION OF THE SEMINARY.

The seclusion and quiet of a rural village is particularly favorable to academic occupation. It was chiefly for this reason, and for the additional advantage of proximity to the College of New Jersey, now Princeton University, that the General Assembly, after mature deliberation, selected Princeton as the site of the first seminary of the Church. Princeton is in quick and easy communication with the neighboring cities of New York and Philadelphia, while yet it is sufficiently removed from them to be free from all distracting influences.

## GIFTS AND BEQUESTS TO THE SEMINARY.

The corporate name of the body in charge of the property of the Seminary is "The Trustees of the Theological Seminary of the Presbyterian Church located at Princeton." Gifts may, at the pleasure of the donors, be directed to the Permanent Fund, which is for the support of the Professors; to the Education Fund, which is for the aid of needy students; to the Contingent Fund, which is for defraying the general expenses of the institution, its buildings, grounds, etc.; to the Sustentation Fund, designed to diminish the expense of boarding; to the Library Fund, or to any other important object connected with the Seminary. The value of a scholarship is from \$2500, which is the minimum, to \$3000.

## ALUMNI ASSOCIATION OF THE SEMINARY.

The Alumni Association of the Seminary will hold its annual meeting in Miller Chapel on Tuesday, May 5th, at the close of the Commencement exercises. The Alumni will dine together in Stuart Hall.

The officers of the Association for the present year are as follows: *President*, Francis L. Patton, D.D., LL.D., of Princeton; *Vice-President*, A. Woodruff Halsey, D.D., New York City; *Honorary Secretary*, William E. Schenck, D.D., of Montclair, N. J.; *Secretary*, Rev. Joseph H. Dulles, of Princeton; *Treasurer*, William Brenton Greene, Jr., D.D., of Princeton. These with Rev. Charles Herr, D.D., of Jersey City, Rev. C. A. R. Janvier, of Philadelphia, and Rev. George L. Richmond, of Boonton, N. J., constitute the Executive Committee.

## THE ANNUAL NECROLOGICAL REPORT.

This publication, begun in 1875, contains a brief biographical notice of each of the Alumni of the Seminary dying within the course of a given year. It is prepared by the Secretary of the Alumni Association, who earnestly solicits early and full information respecting deceased Alumni.

## THE GENERAL CATALOGUE.

The General Catalogue of the Seminary was revised and brought up to date in 1894. It contains biographical data of all former students of the Seminary, making a volume of four hundred pages. It will be sent free to former students on application to the Librarian.

# SCHEDULE OF LECTURES AND RECITATIONS.

CLASS.	TIME.	MONDAY.	TUESDAY.	WEDNESDAY.	THURSDAY.	FRIDAY	SATURDAY.
SENIOR.	9 A. M.		Mr. Armstrong	Dr. Warfield.	Dr. Warfield.	Dr. Greene.	Dr. Greene. (8.30)
	11 A. M.		Dr. Martin.	Dr. Martin.	Dr. Vos.	Dr. Vos.	
	2 P. M.				Dr. De Witt.	Dr. De Witt.	
MIDDLE.	4 P. M.	Dr. Davis.	Dr. Davis.	Mr. Armstrong	Dr. De Witt.	Dr. De Witt.	
	9 A. M.		Dr. Davis.	Dr. Davis.	Dr. De Witt.	Dr. Warfield	Dr. Warfield (8.30)
	11 A. M.	Dr. Wilson.	Dr. Wilson.	Dr. DeWitt.	Dr. Martin.	Dr. Martin.	
	4 P. M.	Dr. Vos.	Dr. Vos.	Dr. DeWitt.	Mr. Armstrong	Mr. Armstrong	
JUNIOR.			Dr. Greene.	Mr. Armstrong	Dr. Davis.	Dr. Martin.	Mr. Armstrong (8.30) Mr. Smith. (9.30)
	9 A. M.			Dr. Davis.	Dr. Warfield.	Dr. Warfield.	
	10 A. M.			Mr. Smith.	Mr. Smith.	Mr. Smith.	
	11 A. M.	Dr. Patton.	Dr. Patton.	Mr. Wilson &	Dr. Wilson &	Dr. Wilson &	
	4 P. M.	Dr. Wilson &	Dr. Wilson &	Mr. Boyd.	Mr. Boyd.	Mr. Boyd.	
		Mr. Boyd.	Mr. Boyd.	Mr. Smith	Mr. Smith.	Mr. Smith.	
	5.15 P. M.						

The First Term closes with examinations on Saturday, January 10th, 1893. The change of schedule in the Second Term concerns the Junior and Middle Classes only : Dr. Greene meets the Middle Class on Monday and Tuesday at 11 A. M. ; Dr. Wilson meets the Middle Class on Wednesday at 9 A. M., and the Junior Class on Thursday at 9 A. M. ; Dr. Davis and Mr. Armstrong exchange hours with the Junior Class on Wednesday morning. Evening Prayers at 5 P. M. in the Oratory. Senior Preaching, Tuesday, 7 P. M., in the Chapel ; Middle Preaching, Friday, 7 P. M., and Junior Preaching on Thursday, 7 P. M., in the Oratory.



# SCHEDULE OF EXTRA-CURRICULUM CLASSES, 1902-1903.

TIME.	MONDAY.	TUESDAY.	WEDNESDAY.	THURSDAY.	FRIDAY.
10-11		<p>Dr. HODGE. The Doctrine of the Person of Christ. Syst. Theol. principal.</p> <p>Mr. BOYD. Arabic for beginners. Sem. Phil. principal.</p>	<p>Dr. WARFIELD. Augustine and Latin Patristic Theology. Syst. Theol. principal.</p>	<p>Dr. VOS. The Teaching of Paul. The Application of Redemption (continued). N. T. principal.</p>	<p>Dr. GREENE. Philosophical Apologetics and Comparative Religion. Syst. Theol. principal. Counts for 2 hours. Not open to Juniors.</p> <p>—</p> <p>Dr. WILSON. Higher Criticism. Special studies. O. T. principal.</p>
12-1	<p>Dr. WILSON. Hebrew. Rapid Reading. Semitic Phil. principal.</p>	<p>Dr. WILSON. Semitic Phil. principal.</p> <p>Mr. BOYD. Syriac for beginners. Semitic Phil. principal.</p>	<p>Dr. WILSON. Sem. Phil. principal. Not open to Juniors.</p> <p>Mr. BOYD. Syriac for beginners. Sem. Phil. principal.</p>	<p>Mr. BOYD. Arabic for beginners. Semitic Phil. principal.</p>	<p>Dr. VOS. Exegesis of Epistle to the Hebrews (continued). N. T. principal.</p>
3-4	<p>Dr. DAVIS, before Abraham. O. T. principal.</p>	<p>Dr. DAVIS. Historical Criticism of the Books of Samuel and Kings (continued). O. T. principal.</p> <p>Dr. VOS. Teaching of the Eighth Century Prophets. O. T. principal. Not open to Juniors.</p>		<p>Dr. GREENE. Metaphysics of Christian Apologetics. Syst. Theol. principal.</p>	
8-9		<p>Dr. DEWITT. Seminar in the History of Doctrine. Church History principal. Not open to Juniors.</p>	<p>Dr. WILSON. Textual Criticism of Old Testament. O. T. principal. Counts for 2 hours.</p>		<p>Dr. GREENE. The Ten Commandments. Syst. Theol. principal.</p>



## CALENDAR.

---

### 1902.

- Sept. 18.* Opening of the session, matriculation of new students, and drawing for rooms.  
*Sept. 19.* Opening address at 11 o'clock in Miller Chapel.  
*Sept. 22–Oct. 13.* Examinations for the removal of conditions.  
*Oct. 14.* Stated meeting of the Board of Directors.  
*Nov. 11.* Stated meeting of the Board of Trustees.  
*Nov. 27.* Thanksgiving Day.  
*Dec. 20, 9:30 a.m.* Christmas vacation begins.

### 1903.

- Jan. 5, 11 a. m.* Christmas vacation ends.  
*Jan. 10.* Mid-year examinations.  
*Jan. 29.* Day of Prayer for Colleges.  
*April 22–May 1.* Final examinations.  
*May 3.* Sacrament of the Lord's Supper.  
*May 4.* Stated meeting of the Board of Directors.  
*May 5.* 91st Annual Commencement. Meeting of the Board of Trustees.  
*Sept. 17.* Opening of the ninety-first session, matriculation of new students, and drawing for rooms by entering students at 3 o'clock in the Treasurer's office.  
*Sept. 18.* Opening address at 11 o'clock in Miller Chapel.  
*Sept. 21–Oct. 12.* Examinations for the removal of conditions.  
*Oct. 13.* Stated meeting of the Board of Directors.  
*Nov. 10.* Stated meeting of the Board of Trustees.







